



Balancing Products

List Price Book



Jomar Valve is pleased to announce the introduction of a complete line of hydronic balancing packages to its extensive line of valve products. Coil piping packages have revolutionized hydronic installations by using quality engineered combination valves to minimize the time and space required to install hydronic terminal units (Fan Coils). Manual, automatic and pressure independent valves are all available as assembled packages or individual components. All Jomar components and assembled packages are 100% leak tested, bagged and tagged for easy installation. Less installation time, less space and less components with fast reliable deliveries all backed by a 5-year warranty.



To support the design and sizing of these packages Jomar will provide point and click Package Design Software (PDS) free of charge to anyone interested in this product line.

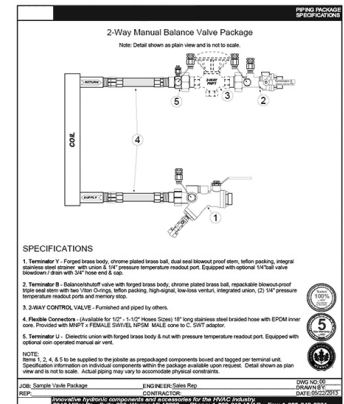
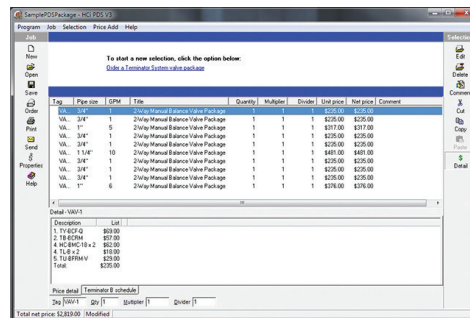
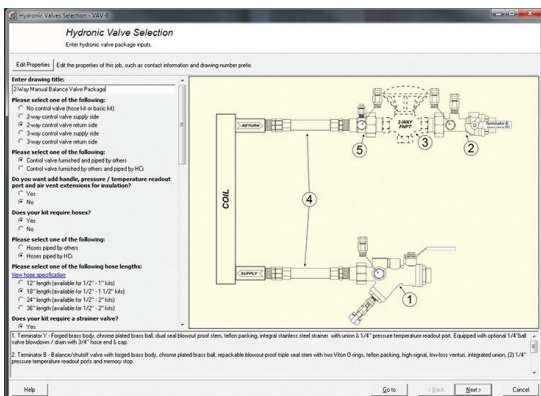
Please contact your Jomar representative or Jomar directly for more information.

Package Design Software

PDS is an interactive tool designed to configure coil-piping packages and hose kits. This is a real time, step by step drawing tool that drastically reduces time spent on the take-off process by simultaneously creating an interactive drawing, quotation, and spec submittal through a simple point and click application.

PDS also streamlines the ordering process by allowing you to simply email your PDS file to Jomar Hydronics, ensuring your order is processed quickly and efficiently.

For a closer look check out www.jomarhydronics.com/pds



Manual Balance Valves.....4-7



Automatic Balance Valves....8-11



Control Valves.....12-14



Pressure Independent Control Valves.....15-18



Strainers.....19-21



Combination Ball Valves and Unions..... 22-23



Flexible Hoses.....24



Ball Valves and Accessories..... 25-31



Repair Parts, and Fittings.. 32-38



Manual Balancing Valves

Terminator B Lead Free

Venturi Balance & Shutoff Valve – NSF 372 Certified

Integrated Ball Valve with Memory Stop • Union • Venturi • PT Ports • Location Tag • 1/2" to 3/4" • 400 WOG



Part Number	Size	Outlet / Body Connection	Inlet / Tail Piece Selection	Flow Rate Selection	List Price	Weight (Lbs)
TBG-ACF	1/2"	SWT	FNPT	E.g. 7 GPM	\$69.00	1.3
TBG-ACC	1/2"	SWT	SWT		\$69.00	1.3
TBG-ACM	1/2"	SWT	MNPT		\$69.00	1.3
TBG-BCF	3/4"	SWT	FNPT		\$72.00	1.3
TBG-BCC	3/4"	SWT	SWT		\$72.00	1.3
TBG-BCM	3/4"	SWT	MNPT		\$72.00	1.3

Optional Accessories: Air Vent - Handle Extension - Schrader Valves - Insulation Kit

Specify GPM

7GPM

Specify GPM
1/2" = 0.1 - 11.0
3/4" = 0.1 - 11.0

Terminator B

Venturi Balance & Shutoff Valve

Integrated Ball Valve with Memory Stop • Union • Venturi • PT Ports • Location Tag • 1/2" to 2" • 400 WOG



Part Number	Size	Outlet / Body Connection	Inlet / Tail Piece Selection	Flow Rate Selection	List Price	Weight (Lbs)
TB-A_ _	1/2"	E.g. F	E.g. F	E.g. 7 GPM	\$55.00	1.3
TB-B_ _	3/4"	-	-	-	\$57.00	1.3
TB-C_ _	1"	-	-	-	\$82.00	2
TB-D_ _	1-1/4"	-	-	-	\$125.00	3
TB-E_ _	1-1/2"	-	-	-	\$155.00	4.4
TB-F_ _	2"	-	-	-	\$225.00	6.4

Ordering Guide

TB-BFC

Specify GPM

7GPM

Optional Accessories: Air Vent - Handle Extension - PT Port Extensions - Schrader Valves - Insulation Kit

Outlet / Body Connection
F = FNPT
C = SWT

Inlet / Tail Piece Selection		
1/2" - 2"	3/4" - 2"	1" - 2"
F = FNPT	RF = 1 Sizes Reduced FNPT	2RF = 2 Sizes Reduced FNPT
C = SWT	RC = 1 Sizes Reduced SWT	2RC = 2 Sizes Reduced SWT
M = MNPT	RM = 1 Sizes Reduced MNPT	2RM = 2 Sizes Reduced MNPT

Specify GPM
1/2" = 0.1 - 11.0
3/4" = 0.1 - 11.0
1" = 2.7 - 16.4
1-1/4" = 4.7 - 31.8
1-1/2" = 5.7 - 38.0
2" = 7.5 - 88.0

Manual Balancing Valves

Terminator B SS

Venturi Balance & Shutoff Valve with SS Ball and Stem

Integrated Ball Valve with Memory Stop • Union • Venturi • PT Ports • Location Tag • 1/2" to 2" • 400 WOG



Part Number	Size	Outlet / Body Connection	Inlet / Tail Piece Selection	Flow Rate Selection	List Price	Weight (Lbs)
TBSS-A_ _	1/2"	E.g. F	E.g. F	E.g. 7 GPM	\$79.00	1.3
TBSS-B_ _	3/4"	-	-	-	\$81.00	1.3
TBSS-C_ _	1"	-	-	-	\$113.00	2
TBSS-D_ _	1-1/4"	-	-	-	\$181.00	3
TBSS-E_ _	1-1/2"	-	-	-	\$220.00	4.4
TBSS-F_ _	2"	-	-	-	\$326.00	6.4

Optional Accessories: Air Vent - Handle Extension - PT Port Extensions - Schrader Valves - Insulation Kit

Ordering Guide

TBSS-BFC

Specify GPM

7GPM

Outlet / Body Connection

F = FNPT
C = SWT

Inlet / Tail Piece Selection

1/2" - 2"	3/4" - 2"	1" - 2"
F = FNPT	RF = 1 Sizes Reduced FNPT	2RF = 2 Sizes Reduced FNPT
C = SWT	RC = 1 Sizes Reduced SWT	2RC = 2 Sizes Reduced SWT
M = MNPT	RM = 1 Sizes Reduced MNPT	2RM = 2 Sizes Reduced MNPT

Specify GPM

1/2" = 0.1 - 11.0
3/4" = 0.1 - 11.0
1" = 2.7 - 16.4
1-1/4" = 4.7 - 31.8
1-1/2" = 5.7 - 38.0
2" = 7.5 - 88.0

Terminator B Press

Venturi Balance & Shutoff Valve

Integrated Ball Valve with Memory Stop • Union • Venturi • PT Ports • Location Tag • 1/2" to 2" • 250 WOG



Part Number	Size	Outlet / Body Connection	Inlet / Tail Piece Selection	Flow Rate Selection	List Price	Weight (Lbs)
TB-AP_ _	1/2"	Press	E.g. F	E.g. 7GPM	\$61.00	1.3
TB-BP_ _	3/4"	Press	-	-	\$63.00	1.3
TB-CP_ _	1"	Press*	-	-	\$102.00	2
TB-DP_ _	1-1/4"	Press*	-	-	\$174.00	3
TB-EP_ _	1-1/2"	Press*	-	-	\$217.00	4.4
TB-FP_ _	2"	Press*	-	-	\$344.00	6.4

Optional Accessories: Air Vent - Handle Extension - PT Port Extensions - Schrader Valves - Insulation Kit

*1" - 2" Terminator B Press is a FNPT Body with MNPT x Press Adaptor

Ordering Guide

TB-BP F

Specify GPM

7GPM

Inlet / Tail Piece Selection

1/2" - 2"	3/4" - 2"	1" - 2"
F = FNPT	RF = 1 Sizes Reduced FNPT	2RF = 2 Sizes Reduced FNPT
C = SWT	RC = 1 Sizes Reduced SWT	2RC = 2 Sizes Reduced SWT
M = MNPT	RM = 1 Sizes Reduced MNPT	2RM = 2 Sizes Reduced MNPT

Specify GPM

1/2" = 0.1 - 11.0
3/4" = 0.1 - 11.0
1" = 2.7 - 16.4
1-1/4" = 4.7 - 31.8
1-1/2" = 5.7 - 38.0
2" = 7.5 - 88.0

Terminator B "Insulator"

Insulation Kit

Preformed Polyurethane CFC Free Insulation for Hot & Chilled Water / Meets UL 94H1-F, HBF and DIN 4102 Fire Resistance Classification, Fits Terminator B, B Press, BSS, B LF

Part Number	Size	Description	List Price	Weight (Lbs)
TBI-AB	1/2" - 3/4"	Fits Terminator B Series	\$9.00	0.04
TBI-C	1"	Fits Terminator B Series	\$12.00	0.05
TBI-D	1-1/4"	Fits Terminator B Series	\$14.00	0.05
TBI-EF	1-1/2" - 2"	Fits Terminator B Series	\$25.00	0.1

No Handle or Accessory Extensions needed



Manual Balancing Valves

Terminator B

Venturi Balance & Shutoff Valve

Integrated Venturi Metering Station • Butterfly Valve with Positioning Handle
• PT Port • Location Tag • 2-1/2" - 8" • 200 PSI

Part Number	Size	Outlet Connection	Inlet Selection	Flow Rate (GPM) Range	List Price	Weight (Lbs)
TB-GLF-L	2-1/2"	Lugged	Flanged	23.7- 71.5	\$561.30	36
TB-GLF-H	2-1/2"	Lugged	Flanged	47 - 143	\$561.30	36
TB-HLF-L	3"	Lugged	Flanged	36.5 - 110.5	\$640.29	40
TB-HLF-H	3"	Lugged	Flanged	83.5 - 251.0	\$640.29	40
TB-ILF	4"	Lugged	Flanged	148 - 447	\$917.60	59
TB-JLF	6"	Lugged	Flanged	238 - 716	\$1,385.69	87
TB-KLF	8"	Lugged	Flanged	445 - 1345	\$2,173.82	150

Optional Accessories: PT Port Extensions - Schrader Valves - Air Vent - Drain - Gear Operator



Terminator B

Venturi Balance & Shutoff Valve

Integrated Venturi Metering Station • Butterfly Valve with Positioning Handle
• PT Port • Location Tag • 2-1/2" - 8" • 200 PSI

Part Number	Size	Outlet Connection	Inlet Selection	Flow Rate (GPM) Range	List Price	Weight (Lbs)
TB-GLG-L	2-1/2"	Lugged	Weld/Groove	23.7- 71.5	\$505.12	36
TB-GLG-H	2-1/2"	Lugged	Weld/Groove	47 - 143	\$505.12	36
TB-HLG-L	3"	Lugged	Weld/Groove	36.5 - 110.5	\$587.86	40
TB-HLG-H	3"	Lugged	Weld/Groove	83.5 - 251.0	\$587.86	40
TB-ILG	4"	Lugged	Weld/Groove	148 - 447	\$861.42	59
TB-JLG	6"	Lugged	Weld/Groove	238 - 716	\$1,329.51	87
TB-KLG	8"	Lugged	Weld/Groove	445 - 1345	\$1,911.67	150

Optional Accessories: PT Port Extensions - Schrader Valves - Air Vent - Drain - Gear Operator

Note: Inlet side can be installed utilizing the Valves "groove" end or can be welded



Terminator MS

Venturi Metering Station

Venturi Metering Station with 2 PT Ports • Location Tag • 400 WOG

Part Number	Size	Inlet Connection	Outlet Connection	Flow Rate Selection	List Price	Weight
MS-AFM	1/2"	FNPT	MNPT	E.g. 7 GPM	\$24.50	0.6
MS-BFM	3/4"	FNPT	MNPT	-	\$25.00	0.6

Optional Accessories: PT Port Extensions



Specify GPM

76GPM

Specify GPM

1/2" = 0.1 - 11.0

3/4" = 0.1 - 11.0

Venturi Metering Stations

Terminator MS

Venturi Tube Metering Station Flanged

ANSI Class 150 Flanged, Carbon Steel, Venturi Metering Station with 2 PT Ports • Location Tag • 600 PSI



Part Number	Size	Outlet Connection	Inlet Selection	Flow Rate (GPM) Range	List Price	Weight (Lbs)
MS-GFF-L	2-1/2"	Flanged	Flanged	23.7- 71.5	\$471.87	24
MS-GFF-H	2-1/2"	Flanged	Flanged	47 - 143	\$471.87	24
MS-HFF-L	3"	Flanged	Flanged	36.5 - 110.5	\$539.28	27
MS-HFF-H	3"	Flanged	Flanged	83.5 - 251.0	\$539.28	27
MS-IFF	4"	Flanged	Flanged	148 - 447	\$767.73	39
MS-JFF	6"	Flanged	Flanged	238 - 716	\$1,138.48	59
MS-KFF	8"	Flanged	Flanged	445 - 1345	\$1,760.15	150

Optional Accessories: PT Port Extensions - Schrader Valves - Air Vent - Drain

Terminator MS

Venturi Tube Metering Station Flanged x Weld or Groove

ANSI Class 150 Flanged, Carbon Steel, Venturi Metering Station with 2 PT Ports • Location Tag • 600 PSI



Part Number	Size	Outlet Connection	Inlet Selection	Flow Rate (GPM) Range	List Price	Weight (Lbs)
MS-GFG-L	2-1/2"	Flanged	Weld/Groove	23.7- 71.5	\$415.70	24
MS-GFG-H	2-1/2"	Flanged	Weld/Groove	47 - 143	\$415.70	24
MS-HFG-L	3"	Flanged	Weld/Groove	36.5 - 110.5	\$486.85	27
MS-HFG-H	3"	Flanged	Weld/Groove	83.5 - 251.0	\$486.85	27
MS-IFG	4"	Flanged	Weld/Groove	148 - 447	\$711.55	39
MS-JFG	6"	Flanged	Weld/Groove	238 - 716	\$1,082.31	59
MS-KFG	8"	Flanged	Weld/Groove	445 - 1345	\$1,498.00	150

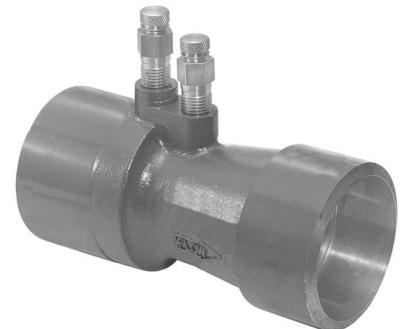
Optional Accessories: PT Port Extensions - Schrader Valves - Air Vent - Drain

Note: Inlet side can be installed utilizing the Valves "groove" end or can be welded

Terminator MS

Venturi Tube Metering Station Weld End

Carbon Steel, Venturi Metering Station with 2 PT Ports • Location Tag 600 PSI



Part Number	Size	Outlet Connection	Inlet Selection	Flow Rate (GPM) Range	List Price	Weight (Lbs)
MS-GWW-L	2-1/2"	Weld	Weld	23.7- 71.5	\$307.09	3
MS-GWW-H	2-1/2"	Weld	Weld	47 - 143	\$307.09	3
MS-HWW-L	3"	Weld	Weld	36.5 - 110.5	\$359.52	4
MS-HWW-H	3"	Weld	Weld	83.5 - 251.0	\$359.52	4
MS-IWW	4"	Weld	Weld	148 - 447	\$509.32	7
MS-JWW	6"	Weld	Weld	238 - 716	\$741.51	12
MS-KWW	8"	Weld	Weld	445 - 1345	\$1,411.87	20

Optional Accessories: PT Port Extensions - Schrader Valves - Air Vent - Drain

Note: Weld x Groove and Groove x Groove available as special order

Automatic Balancing Valves

Terminator A

Integrated Automatic Balancing Valve with Union

Integrated Ball Valve • Union • PT Ports • Automatic Flow Cartridge • Location Tag • 1/2" to 2" • 600 WOG



Part Number	Size	Outlet/Body Connection	Inlet/Tail Piece Selection	Flow Rate (GPM) Range	List Price	Weight (Lbs)
TA-A__-L	1/2"	E.g. F	E.g. F	E.g. TC-A 0.25	\$81.00	1.4
TA-A__-H	1/2"	-	-	-	\$96.00	1.4
TA-B__-L	3/4"	-	-	-	\$121.00	2.4
TA-B__-H	3/4"	-	-	-	\$162.00	2.4
TA-C__-L	1"	-	-	-	\$128.00	2.8
TA-C__-H	1"	-	-	-	\$169.00	2.8
TA-D__-L	1-1/4"	-	-	-	\$260.00	4.8
TA-D__-H	1-1/4"	-	-	-	\$286.00	4.8
TA-E__-L	1-1/2"	-	-	-	\$262.00	5
TA-E__-H	1-1/2"	-	-	-	\$290.00	5
TA-F__-L	2"	-	-	-	\$415.00	9.3
TA-F__-H	2"	-	-	-	\$560.00	9.3

Ordering Guide

TA-BFC-L

Specify GPM

7GPM

Optional Accessories: Air Vent - PT Port Extension - Handle Extension - Drain Valve - Dielectric Insulator

Outlet Connection	Inlet / Tail Piece Selection		
F = FNPT	1/2" - 2"	3/4" - 2"	1" - 2"
C = SWT	F = FNPT	RF = 1 Sizes Reduced FNPT	2RF = 2 Sizes Reduced FNPT
	C = SWT	RC = 1 Sizes Reduced SWT	2RC = 2 Sizes Reduced SWT
	M = MNPT	RM = 1 Sizes Reduced MNPT	2RM = 2 Sizes Reduced MNPT

Size	Cartridge	GPM																	
1/2" Low	TC-A	0.25	0.5	1.0	1.5	2.0	2.5	3.0											
1/2" High	TC-A	3.5	4.0	4.5	5.0	5.5	6.0	6.5	7.0	7.5	8.0								
3/4" Low	TC-B	0.5	1.0	1.5	2.0	2.5	3.0	3.5	4.0	4.5	5.0	5.5	6.0	6.5	7.0	7.5	8.0	8.5	9.0
3/4" High	TC-B	10.0	11.0	12.0	13.0	14.0	15.0												
1" Low	TC-C	0.5	1.0	1.5	2.0	2.5	3.0	3.5	4.0	4.5	5.0	5.5	6.0	6.5	7.0	7.5	8.0	8.5	9.0
1" High	TC-C	10.0	11.0	12.0	13.0	14.0	15.0	16.0	17.0										
1-1/4" Low	TC-D	5.0	6.0	7.0	8.0	9.0	10.0	11.0	12.0	13.0	14.0	15.0	16.0	17.0	18.0	19.0	20.0		
1-1/4" High	TC-D	21.0	22.0	23.0	24.0	25.0	26.0	27.0	28.0	29.0	30.0	31.0	32.0						
1-1/2" Low	TC-E	5.0	6.0	7.0	8.0	9.0	10.0	11.0	12.0	13.0	14.0	15.0	16.0	17.0	18.0	19.0	20.0		
1-1/2" High	TC-E	21.0	22.0	23.0	24.0	25.0	26.0	27.0	28.0	29.0	30.0	31.0	32.0	33.0	34.0	35.0	36.0	37.0	38.0
2" Low	TC-F	10.0	15.0	20.0	25.0	30.0													
2" High	TC-F	35.0	40.0	45.0	50.0	55.0	60.0	65.0	70.0	75.0	80.0	85.0	90.0						

Automatic Balancing Valves

Terminator A SS

Integrated Automatic Balancing Valve with Union

Integrated Ball Valve with 316SS Ball and Stem • Union • PT Ports • Automatic Flow Cartridge • Location Tag • 1/2" to 2" • 600 WOG



Part Number	Size	Outlet/Body Connection	Inlet/Tail Piece Selection	Flow Rate (GPM) Range	List Price	Weight (Lbs)
TASS-A_-L	1/2"	E.g. F	E.g. F	E.g. TC-A 0.25	\$98.00	1.4
TASS-A_-H	1/2"	-	-	-	\$112.00	1.4
TASS-B_-L	3/4"	-	-	-	\$143.00	2.4
TASS-B_-H	3/4"	-	-	-	\$183.00	2.4
TASS-C_-L	1"	-	-	-	\$151.00	2.8
TASS-C_-H	1"	-	-	-	\$190.00	2.8
TASS-D_-L	1-1/4"	-	-	-	\$304.00	4.8
TASS-D_-H	1-1/4"	-	-	-	\$333.00	4.8
TASS-E_-L	1-1/2"	-	-	-	\$306.00	5
TASS-E_-H	1-1/2"	-	-	-	\$346.00	5
TASS-F_-L	2"	-	-	-	\$506.00	9.3
TASS-F_-H	2"	-	-	-	\$671.00	9.3

Ordering Guide

TASS-BFC-L

Specify GPM

7GPM

Optional Accessories: Air Vent - PT Port Extension - Handle Extension - Drain Valve - Dielectric Insulator

Outlet Connection	Inlet / Tail Piece Selection		
F = FNPT	1/2" - 2"	3/4" - 2"	1" - 2"
C = SWT	F = FNPT	RF = 1 Sizes Reduced FNPT	2RF = 2 Sizes Reduced FNPT
	C = SWT	RC = 1 Sizes Reduced SWT	2RC = 2 Sizes Reduced SWT
	M = MNPT	RM = 1 Sizes Reduced MNPT	2RM = 2 Sizes Reduced MNPT

Size	Cartridge	GPM																		
1/2" Low	TC-A	0.25	0.5	1.0	1.5	2.0	2.5	3.0												
1/2" High	TC-A	3.5	4.0	4.5	5.0	5.5	6.0	6.5	7.0	7.5	8.0									
3/4" Low	TC-B	0.5	1.0	1.5	2.0	2.5	3.0	3.5	4.0	4.5	5.0	5.5	6.0	6.5	7.0	7.5	8.0	8.5	9.0	
3/4" High	TC-B	10.0	11.0	12.0	13.0	14.0	15.0													
1" Low	TC-C	0.5	1.0	1.5	2.0	2.5	3.0	3.5	4.0	4.5	5.0	5.5	6.0	6.5	7.0	7.5	8.0	8.5	9.0	
1" High	TC-C	10.0	11.0	12.0	13.0	14.0	15.0	16.0	17.0											
1-1/4" Low	TC-D	5.0	6.0	7.0	8.0	9.0	10.0	11.0	12.0	13.0	14.0	15.0	16.0	17.0	18.0	19.0	20.0			
1-1/4" High	TC-D	21.0	22.0	23.0	24.0	25.0	26.0	27.0	28.0	29.0	30.0	31.0	32.0							
1-1/2" Low	TC-E	5.0	6.0	7.0	8.0	9.0	10.0	11.0	12.0	13.0	14.0	15.0	16.0	17.0	18.0	19.0	20.0			
1-1/2" High	TC-E	21.0	22.0	23.0	24.0	25.0	26.0	27.0	28.0	29.0	30.0	31.0	32.0	33.0	34.0	35.0	36.0	37.0	38.0	
2" Low	TC-F	10.0	15.0	20.0	25.0	30.0														
2" High	TC-F	35.0	40.0	45.0	50.0	55.0	60.0	65.0	70.0	75.0	80.0	85.0	90.0							

Automatic Balancing Valves

Terminator A Press

Integrated Automatic Balancing Valve with Union

Integrated Ball Valve • Union • PT Ports • Automatic Flow Cartridge • Location Tag • 1/2" to 2" • 250 WOG



Part Number	Size	Outlet / Body Connection	Inlet / Tail Piece Selection	Flow Rate (GPM) Range	List Price	Weight (Lbs)
TA-AP_-L	1/2"	Press	E.g. F	E.g. TC-A 0.25	\$86.00	1.4
TA-AP_-H	1/2"	Press	-	-	\$102.00	1.4
TA-BP_-L	3/4"	Press	-	-	\$126.00	2.4
TA-BP_-H	3/4"	Press	-	-	\$165.00	2.4
TA-CP_-L	1"	Press*	-	-	\$148.00	2.8
TA-CP_-H	1"	Press*	-	-	\$189.00	2.8
TA-DP_-L	1-1/4"	Press*	-	-	\$304.00	4.8
TA-DP_-H	1-1/4"	Press*	-	-	\$330.00	4.8
TA-EP_-L	1-1/2"	Press*	-	-	\$324.00	5
TA-EP_-H	1-1/2"	Press*	-	-	\$352.00	5
TA-FP_-L	2"	Press*	-	-	\$534.00	9.3
TA-FP_-H	2"	Press*	-	-	\$679.00	9.3

Ordering Guide

TA-APF-L

Specify GPM

76GPM

Optional Accessories: Air Vent - PT Port Extension - Handle Extension - Drain Valve - Dielectric Insulator

* 1" - 2" Terminator A Press is a FNPT Body with MNPT x Press Adaptor

Inlet / Tail Piece Selection		
1/2" - 2"	3/4" - 2"	1" - 2"
F = FNPT	RF = 1 Sizes Reduced FNPT	2RF = 2 Sizes Reduced FNPT
C = SWT	RC = 1 Sizes Reduced SWT	2RC = 2 Sizes Reduced SWT
M = MNPT	RM = 1 Sizes Reduced MNPT	2RM = 2 Sizes Reduced MNPT

Size	Cartridge	GPM																	
1/2" Low	TC-A	0.25	0.5	1.0	1.5	2.0	2.5	3.0											
1/2" High	TC-A	3.5	4.0	4.5	5.0	5.5	6.0	6.5	7.0	7.5	8.0								
3/4" Low	TC-B	0.5	1.0	1.5	2.0	2.5	3.0	3.5	4.0	4.5	5.0	5.5	6.0	6.5	7.0	7.5	8.0	8.5	9.0
3/4" High	TC-B	10.0	11.0	12.0	13.0	14.0	15.0												
1" Low	TC-C	0.5	1.0	1.5	2.0	2.5	3.0	3.5	4.0	4.5	5.0	5.5	6.0	6.5	7.0	7.5	8.0	8.5	9.0
1" High	TC-C	10.0	11.0	12.0	13.0	14.0	15.0	16.0	17.0										
1-1/4" Low	TC-D	5.0	6.0	7.0	8.0	9.0	10.0	11.0	12.0	13.0	14.0	15.0	16.0	17.0	18.0	19.0	20.0		
1-1/4" High	TC-D	21.0	22.0	23.0	24.0	25.0	26.0	27.0	28.0	29.0	30.0	31.0	32.0						
1-1/2" Low	TC-E	5.0	6.0	7.0	8.0	9.0	10.0	11.0	12.0	13.0	14.0	15.0	16.0	17.0	18.0	19.0	20.0		
1-1/2" High	TC-E	21.0	22.0	23.0	24.0	25.0	26.0	27.0	28.0	29.0	30.0	31.0	32.0	33.0	34.0	35.0	36.0	37.0	38.0
2" Low	TC-F	10.0	15.0	20.0	25.0	30.0													
2" High	TC-F	35.0	40.0	45.0	50.0	55.0	60.0	65.0	70.0	75.0	80.0	85.0	90.0						

Automatic Balancing Valves

Terminator A

Integrated Automatic Balancing Valve

PT Ports • Automatic Flow Cartridge • Location Tag • 2-1/2" to 8" • 600 WOG

Part Number	Size	Outlet Connection	Inlet Connection	Flow Rate (GPM) Range	List Price	Weight (Lbs)
TA-GW-L	2-1/2"	Wafer	Wafer	10 - 60	\$757.05	13
TA-GW-H	2-1/2"	Wafer	Wafer	61 - 126	\$911.40	13
TA-HW-L	3"	Wafer	Wafer	18 - 126	\$1,058.40	20
TA-HW-H	3"	Wafer	Wafer	127 - 300	\$1,124.55	20
TA-IW-L	4"	Wafer	Wafer	18 - 150	\$1,462.65	26
TA-IW-H	4"	Wafer	Wafer	151 - 326	\$1,602.30	26
TA-JW-L	6"	Wafer	Wafer	62 - 260	Call	32
TA-JW-H	6"	Wafer	Wafer	261 - 526	Call	32
TA-KW-L	8"	Wafer	Wafer	180 - 463	Call	44
TA-KW-H	8"	Wafer	Wafer	464 - 926	Call	44

Optional Accessories: Air Vent - PT Port Extension - Drain Valve

Note: These Valves are special made to order, please allow 4-8 weeks lead time.



Ordering Guide

TA-GW-S

Specify GPM

50GPM

Control Valves

Siemens Zone Valve Body

ANSI Class 125 Body • ANSI Class III Leakage Rate • Linear Flow Characteristic
• Medium Temperature Range: 34°F to 230°F

Part Number	Size	Connection	Porting	CV	List Price	Weight (Lbs)
SZB-A_-2-_	1/2"	E.g. F	2-Way	E.G 4.0	\$47.11	0.8
SZB-B_-2-_	3/4"	_	2-Way	_	\$52.32	1
SZB-C_-2-_	1"	_	2-Way	_	\$67.41	1.7
SZB-A_-3-_	1/2"	_	3-Way	_	\$54.79	1.1
SZB-B_-3-_	3/4"	_	3-Way	_	\$64.86	1.3
SZB-C_-3-_	1"	_	3-Way	_	\$83.70	2.2



Ordering Guide

SZB-BC-2-4.1

Body Connection	CV Options
F = FNPT	1/2" = 1.0, 2.5, 4.0
C = SWT	3/4" = 4.1
	1" = 7.0

Siemens Zone Valve Actuator

Fail Safe

NEMA 1 • UL873 • 9.8 VA Power Consumption • 10 Sec Run Time • Ambient Temperature: 41°F to 122°F

Part Number	Voltage	Starting Position	Signal	Close Off Pressure	List Price	Weight (Lbs)
SZA-FS-_-1	E.g. 24	E.g. NC	On/Off	44	\$116.02	1.2

Voltage	Starting Position
24 = 24 VAC	NO = Normally Open
120 = 120 VAC	NC = Normally Closed



Ordering Guide

SZA-FS-120-NO-1

Siemens Zone Valve Actuator

Fail in Place

0-10VDC: NEMA 1 • UL873 • 2.5 VA Power Consumption • 34 Sec Run Time • Ambient Temperature: 41°F to 122°F

Floating: NEMA 1 • UL873 • 0.8 VA Power Consumption • 150 Sec Run Time • Ambient Temperature: 41°F to 122°F

Part Number	Voltage	Starting Position	Signal	Close Off Pressure	List Price	Weight (Lbs)
SZA-FP-24-_-2	24 VAC	E.g. NC	0-10 VDC	44	\$221.59	0.6
SZA-FP-24-NC-3	24 VAC	NC	Floating	44	\$133.13	0.6

Starting Position
NO = Normally Open
NC = Normally Closed

*Floating is only available normally closed



Ordering Guide

SZA-FP-24-NO-3

Control Valves

Siemens Globe Valve Body

ANSI Class 250 Body • ANSI Class IV Leakage Rate • Equal Percent Flow Characteristic • Medium Temperature Range: 20°F to 250°F

Part Number	Size	Connection	Porting	Normal Position	CV	List Price	Weight (Lbs)
SGB-DF-2_-16	1-1/4"	FNPT	2-Way	E.g. NO	16.0	\$336.38	7
SGB-EF-2_-25	1-1/2"	FNPT	2-Way	_	25.0	\$466.18	9
SGB-FF-2_-40	2"	FNPT	2-Way	_	40.0	\$593.55	13
SGB-DF-3-16	1-1/4"	FNPT	3-Way	N/A	16.0	\$434.64	7
SGB-EF-3-25	1-1/2"	FNPT	3-Way	N/A	25.0	\$582.05	9
SGB-FF-3-40	2"	FNPT	3-Way	N/A	40.0	\$730.72	13

Starting Position
NO = Normally Open
NC = Normally Closed



Ordering Guide

SGB-DF-2NO-16

Siemens Globe Valve Actuator

Fail Safe

On/Off: NEMA 2 • 8 VA Running, 3 VA Holding, Power Consumption •

Ambient Temperature: -25°F to 130°F

0-10VDC & 4-20 mA: NEMA 1 • UL873 • 17 VA Power Consumption • 30 Sec Run Time • Ambient Temperature: 5°F to 122°F

Floating: NEMA 1 • 15 VA Power Consumption • 90 Sec Run Time • Ambient Temperature: 5°F to 122°F

Part Number	Voltage	Signal	Close Off Pressure	List Price	Weight (Lbs)
SGA-FS-24-DF-1	24 VAC	On/Off	100	\$613.39	8.4
SGA-FS-24-DF-4	24 VAC	0-10 VDC & 4-20 mA	117	\$1,218.32	7.5
SGA-FS-24-DF-3	24 VAC	Floating	117	\$1,072.31	7.5



Siemens Globe Valve Actuator

Fail in Place

NEMA 3R • UL873 • 8 VA Power Consumption • 30 Sec Run Time • Ambient Temperature: 23°F to 131°F

Part Number	Voltage	Signal	Close Off Pressure	List Price	Weight (Lbs)
SGA-FP-24-DF-4	24 VAC	0-10 VDC & 4-20 mA	85	\$589.76	-
SGA-FP-24-DF-3	24 VAC	Floating	85	\$511.38	-



Control Valves

Siemens Globe Valve Body

ANSI Class 125 Body • ANSI Class IV Leakage Rate • Equal Percent Flow Characteristic • Medium Temperature Range: 20°F to 250°F

Part Number	Size	Connection	Porting	Normal Position	CV	List Price	Weight (Lbs)
SGB-GF-2_-63	2-1/2"	Flanged	2-Way	E.g. NO	63.0	\$687.06	60
SGB-HF-2_-100	3"	Flanged	2-Way		100.0	\$883.03	76
SGB-IF-2_-160	4"	Flanged	2-Way		160.0	\$1,264.50	124
SGB-JF-2_-400	6"	Flanged	2-Way		400.0	\$2,709.21	212
SGB-GF-3-63	2-1/2"	Flanged	3-Way	N/A	63.0	\$822.96	50
SGB-HF-3-100	3"	Flanged	3-Way	N/A	100.0	\$1,128.56	65
SGB-IF-3-160	4"	Flanged	3-Way	N/A	160.0	\$1,635.44	110
SGB-JF-3-400	6"	Flanged	3-Way	N/A	400.0	\$2,981.06	141



Starting Position
NO = Normally Open
NC = Normally Closed

Ordering Guide

SGB-GF-2 NC -63

Siemens Globe Valve Actuator

Fail Safe

0-10VDC & 4-20 mA: NEMA 1 • UL873 • 18 VA Power Consumption • 30 / 120 Sec Run Time • Ambient Temperature: 5°F to 122°F

Floating: NEMA 1 • UL873 (4" and 6" model) • 20 VA Power Consumption • 90 Sec Run Time • Ambient Temperature: 5°F to 122°F

Part Number	Voltage	Signal	Close Off Pressure*	Size Range	List Price
SGA-FS-24-GH-4	24 VAC	0-10 VDC & 4-20 mA	38 - 22	2-1/2" and 3"	\$1,165.37
SGA-FS-24-GH-3	24 VAC	Floating	38 - 22	2-1/2" and 3"	\$1,025.68
SGA-FS-24-IJ-4	24 VAC	0-10 VDC & 4-20 mA	65 - 17	4" and 6"	\$2,067.65
SGA-FS-24-IJ-3	24 VAC	Floating	65 - 17	4" and 6"	\$1,924.14

*Close off pressure valves based on valve size selected



Siemens Globe Valve Actuator

Fail in Place

NEMA 1 • UL873 (4" and 6" model) • 19 VA Power Consumption • 90 Sec Run Time • Ambient Temperature: 5°F to 122°F

Part Number	Voltage	Signal	Close Off Pressure*	Size Range	List Price
SGA-FP-24-GH-3	24 VAC	Floating	38 - 22	2-1/2" and 3"	\$832.70
SGA-FP-24-IJ-3	24 VAC	Floating	65 - 17	4" and 6"	\$1,636.00

*Close off pressure valves based on valve size selected



Pressure Independent Control Valves

Terminator PICV - 91 Series

Pressure Independent Control Valve

PT Ports • Differential Pressure Regulator • External Flow Presetting Dial •

Axial Control Valve • Location Tag • 360 WOG

Control Range: 5 - 60 PSI

Part Number	Size	Outlet Connection	Inlet Connection	Flow Rate Range (GPM)	List Price
T91-AFF-0.66	1/2"	FNPT	FNPT	0.07 - 0.66	\$149.18
T91-AFF-2.64	1/2"	FNPT	FNPT	0.26 - 2.64	\$149.18
T91-AFF-3.43	1/2"	FNPT	FNPT	0.34 - 3.43	\$158.89
T91-BFF-4.40	3/4"	FNPT	FNPT	0.44 - 4.4	\$173.73
T91-BFF-6.60	3/4"	FNPT	FNPT	0.66 - 6.6	\$182.40



Optional

3.8

Specify factory preset flow rate

Terminator PICV - 93 Series

Pressure Independent Control Valve

PT Ports • Differential Pressure Regulator • External Flow Presetting Dial •

Double Union Connection • Axial Control Valve • Location Tag • 360 WOG

Control Range: 5 - 60 PSI

Part Number	Size	Outlet Connection	Inlet Connection	Flow Rate Range (GPM)	List Price
T93-B_-9.68	3/4"	E.g. F	E.g. F	.97 - 9.68	\$262.90
T93-B_-11.9	3/4"	-	-	1.19 - 11.9	\$283.05
T93-B_-13.2	3/4"	-	-	1.32 - 13.2	\$302.03
T93-C_-9.68	1"	-	-	.97 - 9.68	\$266.34
T93-C_-11.9	1"	-	-	1.19 - 11.9	\$285.26
T93-C_-13.2	1"	-	-	1.32 - 13.2	\$304.24
T93-DFF-11.9	1-1/4"	FNPT	FNPT	1.19 - 11.9	\$316.68
T93-DFF-13.2	1-1/4"	FNPT	FNPT	1.32 - 13.2	\$335.66



Ordering Guide

T93-BFC-9.68

Optional

11.5

Specify factory preset flow rate

Outlet / Tail Piece Connection	Inlet / Tail Piece Connection
F = FNPT	F = FNPT
C = SWT	C = SWT
M = MNPT	M = MNPT

Siemens PICV Actuator - 91/93 Series

Fail Safe

0-10VDC: NEMA 1 • UL873 • 2.5 VA Power Consumption • 90 Sec Run Time •

Ambient Temperature: 41°F to 122°F

Floating: NEMA 1 • UL873 • 0.8 VA Power Consumption • 150 Sec Run Time •

Ambient Temperature: 41°F to 122°F

Part Number	VolTage	Starting Position	Signal	List Price	Weight (Lbs)
SPA-FS-24-NO-2	24 VAC	NO	0-10 VDC	\$290.67	0.8
SPA-FS-24-NO-3	24 VAC	NO	Floating	\$387.56	0.8



Pressure Independent Control Valves

Siemens PICV Actuator - 91/93 Series

Fail in Place

0-10VDC: NEMA 1 • UL873 • 3 VA Power Consumption • 30 Sec Run Time • Ambient Temperature: 41°F to 122°F

Floating: NEMA 1 • UL873 • 3 VA Power Consumption • 125 Sec Run Time • Ambient Temperature: 41°F to 122°F



Part Number	Voltage	Starting Position	Signal	List Price	Weight (Lbs)
SPA-FP-24-NO-2	24 VAC	NO	0-10 VDC	\$242.23	1.3
SPA-FP-24-NO-3	24 VAC	NO	Floating	\$131.37	1.3

Actuator Mounting Rings for Factory Approved Compatible Brands

Note: A mounting ring is included with every PICV actuator sold by Jomar Hydronics. A ring only needs to be purchased if the actuator for the 91/93 series valve is sourced separately.



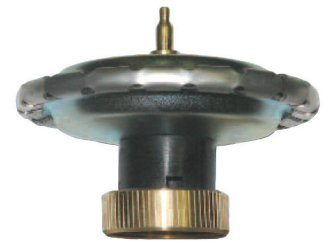
Part Number	Stem Connection	Manufacture Brand	Manufacture Model	List Price	Weight (Lbs)
0A7010	M28X30X1.5	Spartan	ALL	\$3.00	0.1
	M28X30X1.5	Siemens	SSD31UG	\$3.00	0.1
	M28X30X1.5	Siemens	SSD61UG	\$3.00	0.1
0M7410	M28X30X1.5	Siemens	SSD81UG	\$3.00	0.1
	M28X30X1.5	Honeywell	M6410A	\$3.00	0.1
	M28X30X1.5	Honeywell	M7410F	\$3.00	0.1

Spartan PD Actuators

Jomar Hydronics also offers the full range of Spartan PD Actuators including the following style:

Electric Fail Safe • Electric Fail in Place • Thermolectric • Pneumatic

Please contact Jomar Hydronics for details



Pressure Independent Control Valves

Terminator PICV - 85 Series

Pressure Independent Control Valve

PT Ports • Differential Pressure Regulator • Double Union Connection • Rotary Control Valve • Location Tag • 230 WOG
Control Range: 5 - 60 PSI



Part Number	Size	Outlet Connection	Inlet Connection	Flow Rate Range (GPM)	List Price
T85-D_ _-39.6	1-1/4"	E.g. F	E.g. F	3.96 - 39.6	Call
T85-E_ _-39.6	1-1/2"	-	-	3.96 - 39.6	Call
T85-E_ _-52.8	1-1/2"	-	-	5.28 - 52.8	Call
T85-F_ _-52.8	2"	-	-	5.28 - 52.8	Call
T85-F_ _-79.3	2"	-	-	7.93 - 79.3	Call
T85-GFF-79.3	2 1/2"	FNPT	FNPT	7.93 - 79.3	Call

Outlet / Tail Piece Connection	Inlet / Tail Piece Connection
F = FNPT	F = FNPT
C = SWT	C = SWT
M = MNPT	M = MNPT

Ordering Guide

T85-DFC-39.6

Belimo PICV Actuator - 85 Series Actuators

Fail In Place: NEMA 2 • UL60730 • 6.0 VA Power Consumption • 100 Sec Run Time • Ambient Temperature: -22°F to 122°F
Fail Safe: NEMA 2 • UL60730 • 10.0 VA Power Consumption • 150 Sec Run Time • Ambient Temperature: -22°F to 122°F



Part Number	Voltage	Normal Position	Signal	List Price	Weight (Lbs)
ARX24-MFT-NO_ _	24 VAC/DC	NO	E.G. A19	\$686.83	-
ARX24-MFT-NC_ _	24 VAC/DC	NO	-	\$686.83	-
AFRX24-MFT US-NO/FC_ _	24 VAC/DC	NO / FC	-	\$890.00	-
AFRX24-MFT US-NO/F0_ _	24 VAC/DC	NO / FO	-	\$890.00	-

Ordering Guide

ARX24-MFT-NO-A28

Control Signal
A19 = 2-10 VDC
A28 = 0-10 VDC
F03 = Floating
A19 = On/Off

Pressure Independent Control Valves

Terminator PICV - 94F Series

Pressure Independent Control Valve

PT Ports • Differential Pressure Regulator • Flange Connection (ANSI B16.1) • Face to Face Standard (ISA-75.08.01) • Multi-turn Control Valve • Location Tag • 230 WOG

Control Range: 4.35 - 58 PSI

Part Number	Size	Outlet Connection	Inlet Connection	Flow Rate Range (GPM)	List Price
T94F-FFF-88.1*	2"	Flange	Flange	88.1	\$626.50
T94F-GFF-132	2 1/2"	Flange	Flange	132	\$1,050.00
T94F-HFF-176	3"	Flange	Flange	176	\$1,690.50
T94F-IFF-242	4"	Flange	Flange	242	\$3,991.40
T94F-JFF-660	6"	Flange	Flange	660	\$4,380.60

*2" Special Order



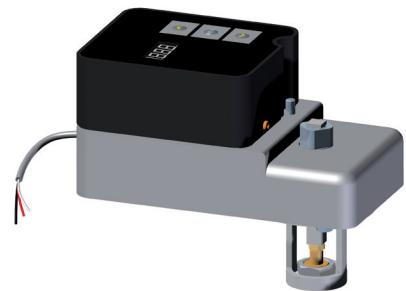
PICV Actuator - 94 Series Actuators

IP 54 • UL Class 2 • 1.5 W Power Consumption • 170 Sec Run Time • Ambient Temperature: -4°F to 140°F

Control Signal, Display information, and Max / Min Flow are Field Adjustable

Part Number	Voltage	Normal Position	Signal	List Price	Weight (Lbs)
YPA-FP-24	24 VAC/DC	NO	Field Adjustable	\$921.27	-

Field Adjustable Control Signal
2-10 VDC
4-20 mA
Floating
PWM
On/Off



Combination Strainer Valves

Terminator S

Strainer & Shutoff Valve with Back Flush

Integrated Ball Valve • 20 Mesh Strainer with Union and PT Port • 1/2" - 2"
400 WOG



Part Number	Size	Inlet / Body Connection	Outlet / Tail Piece Selection	List Price	Weight (Lbs)
TS-A_ _	1/2"	E.g. F	E.g. F	\$75.00	2.4
TS-B_ _	3/4"	-	-	\$80.00	2.4
TS-C_ _	1"	-	-	\$110.00	3.6
TS-D_ _	1-1/4"	-	-	\$175.00	5.4
TS-E_ _	1-1/2"	-	-	\$230.00	8.2
TS-F_ _	2"	-	-	\$338.00	15.1

Optional Accessories: Blowdown - Handle Extensions - Red Aluminum T-Handles - Stainless Steel Round Handle - Fine Mesh Screens - Drain

Ordering Guide

TS-BFC

Optional

Q

Add Drain and Blowdown TQ-B2
\$26.00 List

Inlet / Body Connection	Outlet / Tail Piece Selection		
	1/2" - 2"	3/4" - 2"	1" - 2"
F = FNPT	F = FNPT	RF = 1 Sizes Reduced FNPT	2RF = 2 Sizes Reduced FNPT
C = SWT*	C = SWT	RC = 1 Sizes Reduced SWT	2RC = 2 Sizes Reduced SWT
	M = MNPT	RM = 1 Sizes Reduced MNPT	2RM = 2 Sizes Reduced MNPT

*This configuration requires a MNPT x SWT Adapter

Terminator S Junior (Body Only)

Strainer & Shutoff Valve with Back Flush

Integrated Ball Valve • 20 Mesh Strainer • FIP x FIP body • 1/2" - 2" • 400 WOG



Part Number	Size	Inlet Connection	Outlet Connection	List Price	Weight (Lbs)
TS-AF	1/2"	FNPT	FNPT	\$53.00	2
TS-BF	3/4"	FNPT	FNPT	\$55.00	2
TS-CF	1"	FNPT	FNPT	\$79.00	2.8
TS-DF	1-1/4"	FNPT	FNPT	\$128.00	4.5
TS-EF	1-1/2"	FNPT	FNPT	\$165.00	7
TS-FF	2"	FNPT	FNPT	\$250.00	15

Optional Accessories: Blowdown - Handle Extensions - Red Aluminum T-Handles - Stainless Steel Round Handle - Fine Mesh Screens

Combination Strainer Valves

Terminator Y

Y-Pattern Combination Ball Valve Strainer

Integrated Ball Valve • 20 Mesh Strainer with Union and PT Port • 1/2" - 2" • 600 WOG



Part Number	Size	Inlet / Body Connection	Outlet / Tail Piece Selection	List Price	Weight (Lbs)
TY-A_ _	1/2"	E.g. F	E.g. F	\$37.00	1.5
TY-B_ _	3/4"	-	-	\$56.00	2.3
TY-C_ _	1"	-	-	\$64.00	2.5
TY-D_ _	1-1/4"	-	-	\$110.00	4.5
TY-E_ _	1-1/2"	-	-	\$127.00	5
TY-F_ _	2"	-	-	\$197.00	10

Ordering Guide

TY-B_FC

Optional

Q

Add Drain/Blow-down TQ-B2
\$13.00 List

Optional Accessories: Drain/Blowdown Valve - Air Vent - PT Port Extensions - Schrader Valve - Handle Extension - Fine Mesh Screens

Inlet / Body Connection	Outlet / Tail Piece Selection		
	1/2" - 2"	3/4" - 2"	1" - 2"
F = FNPT	F = FNPT	RF = 1 Sizes Reduced FNPT	2RF = 2 Sizes Reduced FNPT
C = SWT	C = SWT	RC = 1 Sizes Reduced SWT	2RC = 2 Sizes Reduced SWT
	M = MNPT	RM = 1 Sizes Reduced MNPT	2RM = 2 Sizes Reduced MNPT

Terminator Y SS

Y-Pattern Combination Ball Valve Strainer with Stainless Steel Ball and Stem

Integrated Ball Valve • 20 Mesh Strainer with Union and PT Port • 1/2" - 2" • 600 WOG



Part Number	Size	Inlet / Body Connection	Outlet / Tail Piece Selection	List Price	Weight (Lbs)
TYSS-A_ _	1/2"	E.g. F	E.g. F	\$55.00	1.5
TYSS-B_ _	3/4"	-	-	\$78.00	2.3
TYSS-C_ _	1"	-	-	\$86.00	2.5
TYSS-D_ _	1-1/4"	-	-	\$154.00	4.5
TYSS-E_ _	1-1/2"	-	-	\$168.00	5
TYSS-F_ _	2"	-	-	\$270.00	10

Ordering Guide

TYSS-B_FC

Optional

Q

Add Drain/Blow-down TQ-B2
\$13.00 List

Optional Accessories: Drain/Blowdown Valve - Air Vent - PT Port Extensions - Schrader Valve - Handle Extension - Fine Mesh Screens

Inlet / Body Connection	Outlet / Tail Piece Selection		
	1/2" - 2"	3/4" - 2"	1" - 2"
F = FNPT	F = FNPT	RF = 1 Sizes Reduced FNPT	2RF = 2 Sizes Reduced FNPT
C = SWT	C = SWT	RC = 1 Sizes Reduced SWT	2RC = 2 Sizes Reduced SWT
	M = MNPT	RM = 1 Sizes Reduced MNPT	2RM = 2 Sizes Reduced MNPT

Combination Strainer Valves

Terminator Y Press

Y-Pattern Combination Ball Valve Strainer

Integrated Ball Valve • 20 Mesh Strainer with Union and PT Port • 1/2" - 2" • 250 WOG



Part Number	Size	Inlet / Body Connection	Outlet / Tail Piece Selection	List Price	Weight (Lbs)
TY-AP _	1/2"	Press	E.g. F	\$42.00	1.5
TY-BP _	3/4"	Press	_	\$64.00	2.3
TY-CP _	1"	Press*	_	\$84.00	2.5
TY-DP _	1-1/4"	Press*	_	\$154.00	4.5
TY-EP _	1-1/2"	Press*	_	\$169.00	5
TY-FP _	2"	Press*	_	\$316.00	10

Optional Accessories: Drain/Blowdown Valve - Air Vent - PT Port Extensions - Schrader Valve - Handle Extension - Fine Mesh Screens

* 1" - 2" Terminator A Press is a FNPT Body with MNPT x Press Adaptor

Ordering Guide

TY-BP F

Optional

Q

Add Drain/Blowdown TQ-B2
\$13.00 List

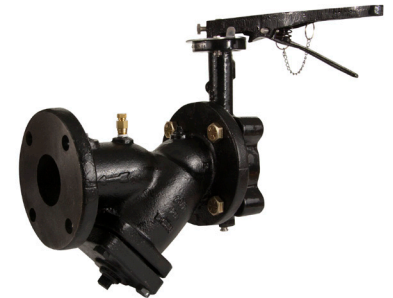
Outlet / Tail Piece Selection

1/2" - 2"	3/4" - 2"	1" - 2"
F = FNPT	RF = 1 Sizes Reduced FNPT	2RF = 2 Sizes Reduced FNPT
C = SWT	RC = 1 Sizes Reduced SWT	2RC = 2 Sizes Reduced SWT
M = MNPT	RM = 1 Sizes Reduced MNPT	2RM = 2 Sizes Reduced MNPT

Terminator S

Strainer & Shutoff Valve

Integrated Butterfly Valve • SS-304 Strainer • PT Port and Additional Accessory Tappings • 200 PSI • 150° F



Part Number	Size	Inlet Connection	Outlet Connection	Drain Option Adder	List Price	Weight (Lbs)
TS-GLF	2-1/2"	Lugged	Flanged	TQ-B5 \$26.00	\$238.91	45
TS-HLF	3"	Lugged	Flanged	TQ-B5 \$26.00	\$278.18	51
TS-ILF	4"	Lugged	Flanged	TQ-B6 \$30.00	\$433.76	88
TS-JLF	6"	Lugged	Flanged	TQ-B7 \$38.00	\$874.23	166
TS-KLF	8"	Lugged	Flanged	TQ-B7 \$38.00	\$1,539.83	312

Optional Accessories - Drain/Blowdown Valve - Air Vent - Accessory Extensions - Schrader Valve - Gear Operator

Terminator Y

Strainer and Additional Tappings

ANSI Class 125 Flanged Cast Iron Strainer with SS-304 Screen with 3 Additional Accessory Tappings • 200PSI • 150° F



Part Number	Size	Inlet Connection	Outlet Connection	Drain Option Adder	List Price	Weight (Lbs)
YS-GFF	2-1/2"	Flange	Flange	TQ-B5 \$26.00	\$149.49	33
YS-HFF	3"	Flange	Flange	TQ-B5 \$26.00	\$177.17	38
YS-IFF	4"	Flange	Flange	TQ-B6 \$30.00	\$283.89	67
YS-JFF	6"	Flange	Flange	TQ-B7 \$38.00	\$627.03	138
YS-KFF	8"	Flange	Flange	TQ-B7 \$38.00	\$1,126.16	275

Optional Accessories: Drain Valve / Blowdown - PT Ports - Air Vent - Accessory Extensions - Butterfly Shut-off Valve

Combination Valves

Terminator N

100% Full Port Multi-function Valve

Integrated Ball Valve • Union & PT Port - Additional Tapping for Optional Accessory • 1/2" - 1": 600 WOG • 1-1/4" - 2": 500 WOG

Part Number	Size	Body Connection	Tail Piece Selection	List Price	Weight (Lbs)
NT-A__	1/2"	E.g. F	E.g. F	\$32.00	1
NT-B__	3/4"	-	-	\$37.00	1.3
NT-C__	1"	-	-	\$59.00	2.3
NT-D__	1-1/4"	-	-	\$121.00	2.5
NT-E__	1-1/2"	-	-	\$153.00	3.5
NT-F__	2"	-	-	\$218.00	5.3



Ordering Guide

NT-BFC

Optional Accessories: Drain Valve - Handle Extension - Air Vent - PT Port Extension - Memory Stop - Stainless Steel Round Handle

Body Connection	Tail Piece Selection		
F = FNPT	1/2" - 2"	3/4" - 2"	1" - 2"
C = SWT	F = FNPT	RF = 1 Sizes Reduced FNPT	2RF = 2 Sizes Reduced FNPT
	C = SWT	RC = 1 Sizes Reduced SWT	2RC = 2 Sizes Reduced SWT
	M = MNPT	RM = 1 Sizes Reduced MNPT	2RM = 2 Sizes Reduced MNPT

Terminator N SS

100% Full Port Multi-function Valve with Stainless Steel Ball and Stem

Integrated Ball Valve • Union & PT Port • Additional Tapping for Optional Accessory • 1/2" - 1": 600 WOG • 1-1/4" - 2": 500 WOG

Part Number	Size	Body Connection	Tail Piece Selection	List Price	Weight (Lbs)
NTSS-A__	1/2"	E.g. F	E.g. F	\$42.00	1
NTSS-B__	3/4"	-	-	\$57.00	1.3
NTSS-C__	1"	-	-	\$76.00	2.3
NTSS-D__	1-1/4"	-	-	\$112.00	2.5
NTSS-E__	1-1/2"	-	-	\$149.00	3.5
NTSS-F__	2"	-	-	\$205.00	5.3



Ordering Guide

NTSS-BFC

Optional Accessories: Drain Valve - Handle Extension - Air Vent - PT Port Extension - Memory Stop - Stainless Steel Round Handle

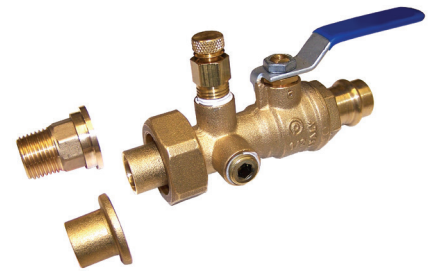
Body Connection	Tail Piece Selection		
F = FNPT	1/2" - 2"	3/4" - 2"	1" - 2"
C = SWT	F = FNPT	RF = 1 Sizes Reduced FNPT	2RF = 2 Sizes Reduced FNPT
	C = SWT	RC = 1 Sizes Reduced SWT	2RC = 2 Sizes Reduced SWT
	M = MNPT	RM = 1 Sizes Reduced MNPT	2RM = 2 Sizes Reduced MNPT

Combination Valves

Terminator N Press

100% Full Port Multi-function Valve

Integrated Ball Valve • Union & PT Port - Additional Tapping for Optional Accessory • 1/2" - 2" • 250 WOG



Ordering Guide

NT-BPF

Part Number	Size	Body Connection	Tail Piece Selection	List Price	Weight (Lbs)
NT-AP _	1/2"	Press	E.g. F	\$36.00	1
NT-BP _	3/4"	Press	_	\$38.00	1.3
NT-CP _	1"	Press	_	\$79.00	2.3
NT-DP _	1-1/4"	Press	_	\$165.00	2.5
NT-EP _	1-1/2"	Press	_	\$215.00	3.5
NT-FP _	2"	Press	_	\$337.00	5.3

Optional Accessories: Drain Valve - Handle Extension - Air Vent - PT Port Extension - Memory Stop - Stainless Steel Round Handle

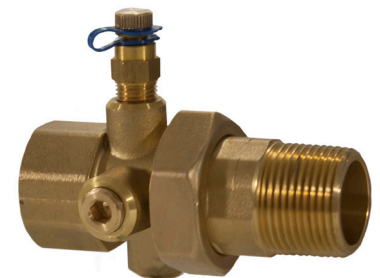
Tail Piece Selection		
1/2" - 2"	3/4" - 2"	1" - 2"
F = FNPT	RF = 1 Sizes Reduced FNPT	2RF = 2 Sizes Reduced FNPT
C = SWT	RC = 1 Sizes Reduced SWT	2RC = 2 Sizes Reduced SWT
M = MNPT	RM = 1 Sizes Reduced MNPT	2RM = 2 Sizes Reduced MNPT

Unions

Terminator U

with PT Port

Integrated Dielectric Union • PT Port • 1/2" - 2" • 400 WOG



Ordering Guide

TU-AFC

Part Number	Size	Body Connection / PT Port Side	Tail Piece Selection	List Price	Weight (Lbs)
TU-A__	1/2"	E.g. F	E.g. F	\$19.00	0.6
TU-B__	3/4"	_	_	\$25.00	0.7
TU-C__	1"	_	_	\$30.00	0.9
TU-D__	1-1/4"	_	_	\$43.00	1.3
TU-E__	1-1/2"	_	_	\$57.00	1.9
TU-F__	2"	_	_	\$77.00	3

Optional Accessories: Drain/Blowdown Valve - Air Vent - PT Port & Accessory Extensions - Schrader Valve

Body Connection	Tail Piece Selection		
	1/2" - 2"	3/4" - 2"	1" - 2"
F = FNPT	F = FNPT	RF = 1 Sizes Reduced FNPT	2RF = 2 Sizes Reduced FNPT
C = SWT	C = SWT	RC = 1 Sizes Reduced SWT	2RC = 2 Sizes Reduced SWT
M = MNPT	M = MNPT	RM = 1 Sizes Reduced MNPT	2RM = 2 Sizes Reduced MNPT

Flexible Hose Connector Parts

Flexible Hose Connectors

Stainless Steel Braided Hose with EPDM Inner Core • MNPT x Female Swivel
 1/2" - 1" NPSM Gasket less Male Cone to Adaptor Connection MNPT, or
 Copper Sweat • 1-1/4" - 2" BA-U Gasket Male Fitting to Adaptor Connection
 MNPT or Copper Sweat • ASTM E84 Fire Rated



Ordering Guide

HC-AM C-12

Swivel / Union End Selection

C = SWT

M = MNPT

Part Number	Size	Fixed End Connection	Swivel / Union End Selection	Length	List Price	Weight (Lbs)
HC-AM_-12	1/2"	MNPT	E.g. C	12"	\$16.00	0.5
HC-AM_-18	1/2"	MNPT	_	18"	\$17.75	0.6
HC-AM_-24	1/2"	MNPT	_	24"	\$20.00	0.7
HC-AM_-36	1/2"	MNPT	_	36"	\$24.25	0.8
HC-BM_-12	3/4"	MNPT	_	12"	\$28.00	0.9
HC-BM_-18	3/4"	MNPT	_	18"	\$31.00	1
HC-BM_-24	3/4"	MNPT	_	24"	\$35.00	1.2
HC-BM_-36	3/4"	MNPT	_	36"	\$41.50	1.5
HC-CM_-12	1"	MNPT	_	12"	\$48.00	1.5
HC-CM_-18	1"	MNPT	_	18"	\$52.00	1.7
HC-CM_-24	1"	MNPT	_	24"	\$55.50	1.9
HC-CM_-36	1"	MNPT	_	36"	\$64.50	2.5
HC-DM_-18	1-1/4"	MNPT	_	18"	\$82.00	2.6
HC-DM_-24	1-1/4"	MNPT	_	24"	\$90.00	3.1
HC-DM_-36	1-1/4"	MNPT	_	36"	\$106.00	3.6
HC-EM_-18	1-1/2"	MNPT	_	18"	\$129.00	3.6
HC-EM_-24	1-1/2"	MNPT	_	24"	\$139.00	4.1
HC-EM_-36	1-1/2"	MNPT	_	36"	\$153.00	5.1
HC-FM_-24	2"	MNPT	_	24"	\$240.00	6.8
HC-FM_-36	2"	MNPT	_	36"	\$275.00	7.3

Flexible Hose Replacement Connectors

Part Number	Size	Body Connection	Swivel / Union End Selection	List Price	Weight (Lbs)
HC-A_	1/2"	Male X Cone	E.g. C	\$6.75	0.1
HC-B_	3/4"	Male X Cone	_	\$10.00	0.2
HC-C_	1"	Male X Cone	_	\$13.50	0.4
HC-D_	1-1/4"	Male X Gasket	_	\$22.00	0.6
HC-E_	1-1/2"	Male X Gasket	_	\$23.00	0.8
HC-F_	2"	Male X Gasket	_	\$43.00	1



Ordering Guide

HC-A C

Swivel / Union End Selection

C = SWT

M = MNPT

Flexible Hose Replacement Gasket

Part Number	Size	Description	List Price	Weight (Lbs)
HCD-Gasket	1-1/4"	BA-U Fiber Gasket	\$1.00	0.01
HCE-Gasket	1-1/2"	BA-U Fiber Gasket	\$1.25	0.01
HCF-Gasket	2"	BA-U Fiber Gasket	\$1.50	0.01



T-100NE

Full Port Ball Valve - FNPT x FNPT

Forged Brass Body • TEA Coated Brass Ball • Brass Stem with Double Viton® O-Rings • 1/2" - 3/4": 600 WOG • 1" - 2": 500 WOG • 2-1/2" - 4": 400 WOG

Part Number	Size	Valve Connection Type	List Price	Weight (Lbs)
100-703	1/2"	FNPT X FNPT	\$9.76	0.5
100-704	3/4"	FNPT X FNPT	\$13.74	0.8
100-705	1"	FNPT X FNPT	\$22.35	1.3
100-706	1-1/4"	FNPT X FNPT	\$38.82	2
100-707	1-1/2"	FNPT X FNPT	\$48.75	2.8
100-708	2"	FNPT X FNPT	\$72.80	4

Optional Accessories: Handle Extension - Memory Stop - Red Aluminum T-Handle - Stainless Steel Round Handle

Note: 2-1/2" - 4" Available



S-100NE

Full Port Ball Valve - SWT x SWT

Forged Brass Body • TEA Coated Brass Ball • Brass Stem with Double Viton® O-Rings • 1/2" - 3/4": 600 WOG • 1" - 2": 500 WOG • 2-1/2" - 3": 400 WOG

Part Number	Size	Valve Connection Type	List Price	Weight (Lbs)
100-803	1/2"	SWT X SWT	\$9.76	0.5
100-804	3/4"	SWT X SWT	\$13.74	0.8
100-805	1"	SWT X SWT	\$22.35	1.3
100-806	1-1/4"	SWT X SWT	\$38.82	2
100-807	1-1/2"	SWT X SWT	\$48.75	2.8
100-808	2"	SWT X SWT	\$72.80	4

Optional Accessories: Handle Extension - Memory Stop - Red Aluminum T-Handle - Stainless Steel Round Handle

Note: 2-1/2" - 3" Available



T-100SSE

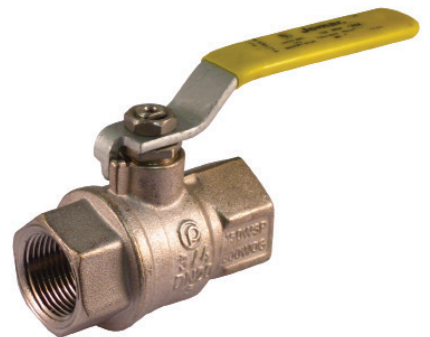
Full Port Ball Valve - Stainless Steel Trim FNPT x FNPT

Forged Brass Valve with TEA Coated Body • 316 Stainless Steel Ball and Stem with Double Viton® O-Rings • 1/2" - 3/4": 600 WOG • 1" - 2": 500 WOG

Part Number	Size	Valve Connection Type	List Price	Weight (Lbs)
100-503	1/2"	FNPT X FNPT	\$19.90	0.5
100-504	3/4"	FNPT X FNPT	\$26.63	0.8
100-505	1"	FNPT X FNPT	\$39.10	1.3
100-506	1-1/4"	FNPT X FNPT	\$58.52	2
100-507	1-1/2"	FNPT X FNPT	\$78.18	2.8
100-508	2"	FNPT X FNPT	\$108.20	4

Optional Accessories: Handle Extension - Memory Stop - Red Aluminum T-Handle - Stainless Steel Round Handle

Note: 2-1/2" - 3" Available



Valves

S-100SSE

Full Port Ball Valve - Stainless Steel Trim SWT x SWT

Forged Brass Valve with TEA Coated Body • 316 Stainless Steel Ball and Stem with Double Viton® O-Rings • 1/2" - 3/4": 600 WOG • 1" - 2": 500 WOG



Part Number	Size	Valve Connection Type	List Price	Weight (Lbs)
100-513	1/2"	SWT X SWT	\$19.90	0.5
100-514	3/4"	SWT X SWT	\$26.63	0.8
100-515	1"	SWT X SWT	\$39.10	1.3
100-516	1-1/4"	SWT X SWT	\$58.52	2
100-517	1-1/2"	SWT X SWT	\$78.18	2.8
100-518	2"	SWT X SWT	\$108.20	4

Optional Accessories: Handle Extension - Memory Stop - Red Aluminum T-Handle - Stainless Steel Round Handle

Note: 2-1/2" - 3" Available

JP-100PxP

Full Port Ball Valve - Press x Press

Forged Brass Body • Chrome Plated Brass Ball • Brass Stem with Double Viton® O-Ring • 250 WOG



Part Number	Size	Valve Connection Type	List Price	Weight (Lbs)
100-203	1/2"	Press X Press	\$16.59	0.6
100-204	3/4"	Press X Press	\$19.90	1
100-205	1"	Press X Press	\$26.76	1.6
100-206	1-1/4"	Press X Press	\$45.94	2.1
100-207	1-1/2"	Press X Press	\$64.04	3.8
100-208	2"	Press X Press	\$109.65	5.3

Optional Accessories: Handle Extension - Memory Stop - Red Aluminum T-Handle - Stainless Steel Round Handle

Note: 2-1/2" - 4" Available

T-100FMN

Full Port Ball Valve - FNPT x MNPT

Forged Brass Body • TEA Coated Brass Ball • Brass Stem with Double Viton® O-Rings • 1/2" - 3/4": 600 WOG • 1": 500 WOG



Part Number	Size	Valve Connection Type	List Price	Weight (Lbs)
100-601	1/4"	FNPT X MNPT	\$10.74	0.3
100-602	3/8"	FNPT X MNPT	\$10.74	0.4
100-603	1/2"	FNPT X MNPT	\$10.74	0.5
100-604	3/4"	FNPT X MNPT	\$15.20	0.9
100-605	1"	FNPT X MNPT	\$23.50	1.4

Optional Accessories: Handle Extension - Memory Stop - Red Aluminum T-Handle - Stainless Steel Round Handle

S-100FMN

Full Port Ball Valve - SWT x MNPT

Forged Brass Body • TEA Coated Brass Ball • Brass Stem with Double Viton® O-Rings • 1/2" - 3/4": 600 WOG • 1": 500 WOG

Part Number	Size	Valve Connection Type	List Price	Weight (Lbs)
100-613	1/2"	SWT X MNPT	\$14.75	0.5
100-614	3/4"	SWT X MNPT	\$21.12	0.8
100-615	1"	SWT X MNPT	\$29.95	1.4

Optional Accessories: Handle Extension - Memory Stop - Red Aluminum T-Handle - Stainless Steel Round Handle



BFV-Lug

Lugged Type with Positioning Handle

ANSI Class 125 Lugged Cast Iron BFV with EPDM seats • 416SS Stem • CF8M/SS Disc • 200 PSI

Part Number	Size	Valve Connection Type	List Price	Weight (Lbs)
600-212DSEL	2-1/2"	Lug X Lug	\$73.26	11.24
600-03DSEL	3"	Lug X Lug	\$82.73	12.34
600-04DSEL	4"	Lug X Lug	\$122.77	21.82
600-06DSEL	6"	Lug X Lug	\$202.50	35.60
600-08DSEL	8"	Lug X Lug	\$348.78	45.96

Optional Accessories: Gear Operator 2-1/2" - 8"

Note: Wafer available



Terminator BFV Gear Operator

Part Number	Size	List Price	Weight (Lbs)
BG02-3	2-1/2" - 3"	\$56.66	11.46
BG04	4"	\$56.86	11.46
BG05-6	6"	\$56.86	11.46
BG08	8"	\$96.36	28.66



Industrial Y-Pattern Check Valves 85-5-5-5 Bronze

Unrestricted Flow Vertical or Horizontal Position with Teflon Gasket • 300 WOG

Part Number	Size	Valve Connection Type	List Price	Weight (Lbs)
105-303	1/2"	FNPT X FNPT	\$27.54	0.6
105-304	3/4"	FNPT X FNPT	\$37.56	0.9
105-305	1"	FNPT X FNPT	\$58.61	1.5
105-306	1-1/4"	FNPT X FNPT	\$77.49	1.9
105-307	1-1/2"	FNPT X FNPT	\$115.26	3.2
105-308	2"	FNPT X FNPT	\$158.71	4.6

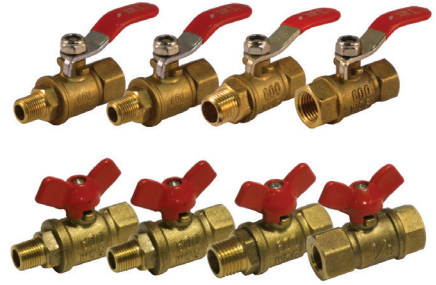


Hydronic Accessories

Mini Drain or Blowdown Valve

Forged Brass Body • Chrome Plated Brass Ball • Brass Stem with Double Viton® O-Rings • 600 WOG

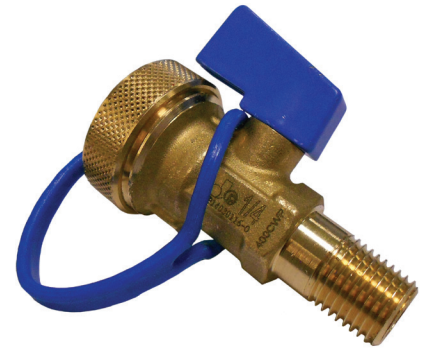
Part Number	Size	Valve Connection Type	Valve Connection Type	List Price	Weight (Lbs)
100-298	1/4"	1/4 " FNPT	1/8" MNPT	\$10.00	0.2
100-299	1/4"	1/4 " FNPT	1/4" MNPT	\$10.00	0.2
100-300	1/4"	1/4 " FNPT	1/4 " FNPT	\$10.00	0.2
100-398	1/4"	1/4 " FNPT	1/8" MNPT	\$6.00	0.2
100-399	1/4"	1/4 " FNPT	1/4" MNPT	\$6.00	0.2
100-400	1/4"	1/4 " FNPT	1/4 " FNPT	\$6.00	0.2



Drain or Blowdown Valve with 3/4" Garden Hose Male

Forged Brass Body • Chrome Plated Brass Ball • Brass Stem with Double Viton® O-Rings • Cap and Retainer • 600 WOG

Part Number	Size	Inlet Connection	Outlet Connection	List Price	Weight (Lbs)
TQ-B1	1/4"	1/4 " MNPT	3/4" GH	\$13.00	0.4
TQ-B2	1/4"	1/8 " MNPT	3/4"GH	\$13.00	0.4
TQ-B3K	1/2"	1/2" MNPT FTG	3/4"GH	\$14.00	0.7
TQ-B4	3/4"	3/4" MNPT FTG	3/4"GH	\$19.00	1
TQ-B5	1"	1" MNPT FTG	3/4"GH	\$26.00	1.3
TQ-B6	1-1/2"	1-1/2" MNPT FTG	3/4"GH	\$30.00	1.5
TQ-B7	2"	2" MNPT FTG	3/4"GH	\$38.00	1.5



TQ Series Replacement Cap, Washer & Retainer Kit

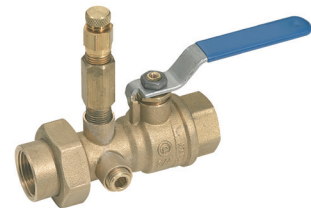
Part Number	Size	List Price	Weight (Lbs)
TQ-Cap	ALL TQ	\$3.75	0.1



PT Port & Air Vent Accessory Extension

Extruded Brass 2-3/4" Long / 1/4" NPT Male x FeMale Fitting

Part Number	Size	Inlet Connection	Outlet Connection	List Price	Weight (Lbs)
SX-A	1/4"	MNPT	FNPT	\$6.00	0.1



Hydronic Accessories

Manual Air Vent

Nickel Plated Brass • Coin Operated • Screwdriver Slot

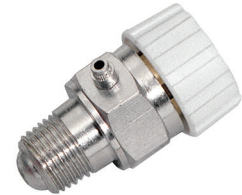
Part Number	Size	Inlet Connection	List Price	Weight (Lbs)
TV-A	1/8"	MNPT	\$4.00	0.1
TV-A2	1/4"	MNPT	\$4.00	0.1
TV-B	1/2"	MNPT FTG	\$5.00	0.2
TV-C	3/4"	MNPT FTG	\$6.00	0.3



Automatic Air Vent

Automatic Air Vent with Manual Mode Option

Part Number	Size	Inlet Connection	List Price	Weight (Lbs)
AAV-A	1/8"	MNPT	\$8.00	0.1
AAV-A1	1/4"	MNPT	\$8.00	0.1
AAV-B	1/2"	MNPT FTG	\$10.00	0.2
AAV-C	3/4"	MNPT FTG	\$12.00	0.3



Pressure Temperature Ports

Brass Body/Cap • Nordel Core • 1000 PSIG • Max. Temp. 350° F

Part Number	Size	Inlet Connection	Port Length	List Price	Weight (Lbs)
SP-B	1/4"	MNPT	1-1/2"	\$3.00	0.1
SP-BXL	1/4"	MNPT	3"	\$9.00	0.2



PT Port Replacement Cap

Brass Cap with EPDM Gasket

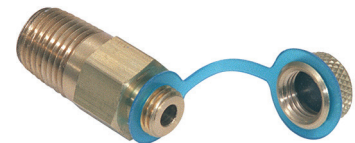
Part Number	Size	List Price	Weight (Lbs)
RCap	ALL PT'S	\$0.50	0.01



Pressure Temperature Port Cap Retainer

Plastic Cap Retainer Rings

Part Number	Size	Color	List Price	Weight (Lbs)
PRCap	1/4"	BLUE	\$0.60	0.01



Hydronic Accessories

Ball Valve Memory Stop

Forged Brass Stop • 0 - 100% Indicator Pad - Compatible with TX-MS Series Handle Extensions

Part Number	Compatible With			List Price	Weight (Lbs)
	TB	NT	T100		
MS-A	1/2", 3/4"	1/2"	1/2"	\$4.00	0.05
MS-B	1"	3/4"	3/4"	\$5.00	0.05
MS-C	1-1/4", 1-1/2"	1", 1-1/4"	1", 1-1/4"	\$7.00	0.05
MS-D	2"	1-1/2", 2"	1-1/2", 2"	\$11.00	0.15



TA-TY Models Ball Valve Handle Extensions

Carbon Steel with Phosphate/Zinc Coating - Not compatible with Memory Stop

Part Number	Size	Compatible With	List Price	Weight (Lbs)
TX-A	1/2"	Fits Terminator A & Y Series	\$14.00	0.4
TX-B	3/4" - 1"	Fits Terminator A & Y Series	\$15.00	0.5
TX-C	1-1/4" - 1-1/2"	Fits Terminator A & Y Series	\$17.50	0.6
TX-D	2"	Fits Terminator A & Y Series	\$24.25	0.6



TB-NT-TS-T100 Models Ball Valve Handle Extension

2" Long Brass Extension Compatible with Ball Valve Memory Stop*

Part Number	Compatible With				List Price	Weight (Lbs)
	TB	NT	T100	TS		
TX-A-MS	1/2", 3/4"	1/2"	1/2"	-	\$14.00	0.4
TX-B-MS	1"	3/4"	3/4"	-	\$15.00	0.5
TX-C-MS	1-1/4", 1-1/2"	1", 1-1/4"	1", 1-1/4"	1/2", 3/4", 1"	\$17.50	0.6
TX-D-MS	2"	1-1/2", 2"	1-1/2", 2"	1-1/4", 1-1/2"	\$24.25	0.6

* Memory stop not included



Meter Kits and Accessories

Pressure/Temperature Test Kit

Portable Test Kit in a Sturdy Custom Carrying Case

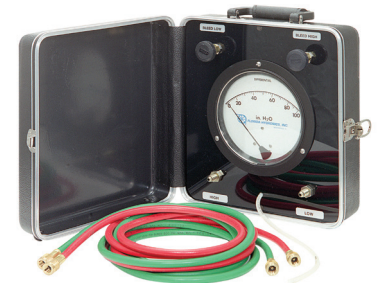
Part Number	Gauge Size	Description	List Price	Weight (Lbs)
HTK1-2.5	2 1/2"	(1) 2 1/2" Test Gauge (PSI) (1) Gauge Adaptor (1) 1" 0 - 220°F Thermometer (1) 1" 50 - 500°F Thermometer	\$250.00	1.35
HTK2-2.5	2 1/2"	(2) 2 1/2" Test Gauge (PSI) (2) Gauge Adaptor (1) 1" 0-220°F Thermometer (1) 1" 50 - 500°F Thermometer	\$330.00	1.75
HTK1-3.5	3 1/2"	(1) 3 1/2" Test Gauge (PSI) (1) Gauge Adaptor (1) 1" 0-220°F Thermometer (1) 1" 50 - 500°F Thermometer	\$395.00	1.5
HTK2-3.5	3 1/2"	(2) 3 1/2" Test Gauge (PSI) (2) Gauge Adaptor (1) 1" 0-220°F Thermometer (1) 1" 50 - 500 F Thermometer	\$540.00	2.1



Portable Differential Meter Kit

6" Dial Face • Accuracy +2% • Equipped with Probes for PT Plug use

Part Number	DP IN. (WC) Range	Description	List Price	Weight (Lbs)
MK-50	0" - 50"	DIFFERENTIAL Pressure IN. OF WC	\$2,050.00	9.5
MK-100	0" - 100"	DIFFERENTIAL Pressure IN. OF WC	\$2,050.00	9.5



Pressure Temperature Test Port Probes

Part Number	Size	Outlet Connection	Probe Diameter	Probe Length	List Price	Weight (Lbs)
GA-063S	1/4"	FNPT	1/16"	1-1/2"	\$24.00	0.05
GA-063L	1/4"	FNPT	1/16"	1-3/4"	\$24.00	0.05
GA-125S	1/4"	FNPT	1/8"	1-1/2"	\$24.00	0.05
GA-125I	1/4"	FNPT	1/8"	1-3/4"	\$24.00	0.05



Test Probe Accessories

Part Number	Size	Description	List Price	Weight (Lbs)
GA-GUARD	ALL GA	Fits All GA Series	\$2.00	0.01
GA-Adapter	ALL GA	1/4" FL X 1/4" MNPT Hose X Gauge Adapter	\$1.00	0.05

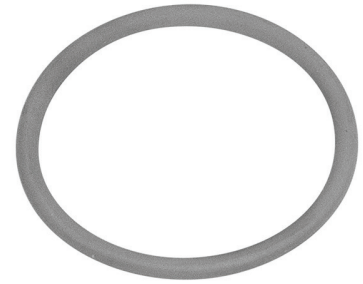


Replacement Parts

Terminator N & Terminator B Replacement Union O-Rings

Viton® O-Ring for Union Seal on Terminator N & Terminator B

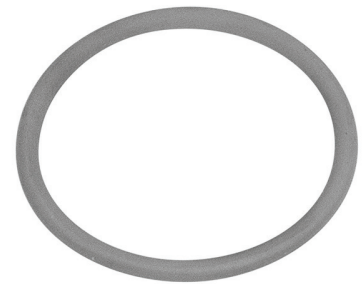
Part Number	Size	Compatible With	List Price	Weight (Lbs)
VOR-A	1/2"	Fits 1/2" Terminator N	\$0.90	0.01
VOR-B	3/4"	Fits 3/4" Terminator N & 1/2" & 3/4" TB Series	\$1.00	0.01
VOR-C	1"	Fits 1" Terminator N & TB Series	\$2.10	0.01
VOR-D	1-1/4"	Fits 1-1/4" Terminator N & TB Series	\$2.20	0.01
VOR-E	1-1/2"	Fits 1-1/2" Terminator N & TB Series	\$3.10	0.02
VOR-F	2"	Fits 2" Terminator N & TB Series	\$4.10	0.02



Terminator 93 Series Union Body Series Replacement Union O-Rings

Viton® O-Ring for Union Seal on Terminator 93 Series Union Body

Part Number	Size	Compatible With	List Price	Weight (Lbs)
VOR-D	3/4" - 1-1/4"	Fits Terminator 93 Series	\$0.90	0.01



Replacement Parts

Terminator U, Y, S & A Replacement Union Gaskets

EPDM Flat Washer

Part Number	Size	Compatible With	List Price	Weight (Lbs)
UG-A	1/2"	Fits Terminator U, Y, S & A Series	\$0.60	0.01
UG-B	3/4"	Fits Terminator U, Y, S & A Series	\$0.70	0.01
UG-C	1"	Fits Terminator U, Y, S & A Series	\$0.80	0.01
UG-D	1-1/4"	Fits Terminator U, Y, S & A Series	\$1.00	0.02
UG-E	1-1/2"	Fits Terminator U, Y, S & A Series	\$1.10	0.02
UG-F	2"	Fits Terminator U, Y, S & A Series	\$1.50	0.04



Terminator U, Y, S & A Dielectric Insulator

Glass Reinforced Nylon Insulator

Part Number	Size	Compatible With	List Price	Weight (Lbs)
DI-A	1/2"	Fits Terminator U, Y, S & A Series	\$0.40	0.01
DI-B	3/4"	Fits Terminator U, Y, S & A Series	\$0.50	0.01
DI-C	1"	Fits Terminator U, Y, S & A Series	\$0.60	0.01
DI-D	1-1/4"	Fits Terminator U, Y, S & A Series	\$0.70	0.01
DI-E	1-1/2"	Fits Terminator U, Y, S & A Series	\$0.80	0.02
DI-F	2"	Fits Terminator U, Y, S & A Series	\$0.90	0.02



Terminator Y & A Replacement Service Cap Gaskets

BUNA O-Ring Gasket

Part Number	Size	Compatible With	List Price	Weight (Lbs)
TYA-OR	1/2"	Fits Terminator Y & A Service Cap	\$0.60	0.01
TYBC-OR	3/4" - 1"	Fits Terminator Y & A Service Cap	\$0.70	0.01
TYED-OR	1-1/4" - 1-1/2"	Fits Terminator Y & A Service Cap	\$0.80	0.02
TYF-OR	2"	Fits Terminator Y & A Service Cap	\$0.90	0.02

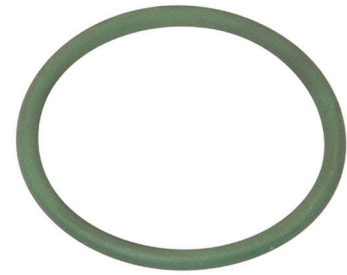


Replacement Parts

Terminator S Replacement Service Cap Gaskets

BUNA O-Ring Gasket

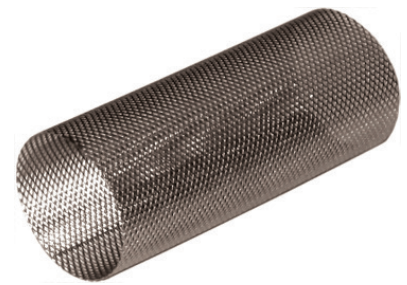
Part Number	Size	Description	List Price	Weight (Lbs)
TSA-OR	1/2" - 3/4"	Fits Terminator S Service Cap	\$1.75	0.01
TSC-OR	1"	Fits Terminator S Service Cap	\$2.50	0.01
TSD-OR	1-1/4"	Fits Terminator S Service Cap	\$3.00	0.02
TSE-OR	1-1/2"	Fits Terminator S Service Cap	\$3.75	0.02
TSF-OR	2"	Fits Terminator S Service Cap	\$4.25	0.02



Terminator Y Replacement Filters

304 Stainless Steel Filter - 20 Mesh

Part Number	Size	Description	List Price	Weight (Lbs)
H221-233	1/2"	Terminator Y 20 Mesh 304 Filter	\$2.00	0.01
H221-234	3/4" - 1"	Terminator Y 20 Mesh 304 Filter	\$3.00	0.01
H221-235	1-1/4" - 1-1/2"	Terminator Y 20 Mesh 304 Filter	\$4.00	0.01
H221-236	2"	Terminator Y 20 Mesh 304 Filter	\$5.00	0.03



Terminator S Replacement Filters

304 Stainless Steel Filter

Part Number	Size	Description	List Price	Weight (Lbs)
221-004	1/2" - 3/4"	Terminator S 20 Mesh 304 Filter	\$8.00	0.01
221-005	1"	Terminator S 20 Mesh 304 Filter	\$9.00	0.01
221-006	1-1/4"	Terminator S 20 Mesh 304 Filter	\$12.00	0.02
221-007	1-1/2"	Terminator S 20 Mesh 304 Filter	\$14.00	0.04
221-008	2"	Terminator S 20 Mesh 304 Filter	\$18.00	0.07
221-114	1/2" - 3/4"	Terminator S 40 Mesh 304 Filter	\$8.00	0.01
221-115	1"	Terminator S 40 Mesh 304 Filter	\$9.00	0.01
221-116	1-1/4"	Terminator S 40 Mesh 304 Filter	\$12.00	0.02
221-117	1-1/2"	Terminator S 40 Mesh 304 Filter	\$14.00	0.04
221-118	2"	Terminator S 40 Mesh 304 Filter	\$18.00	0.07

Note: 60, 80, 100 mesh replacement filters are available



Replacement Parts

Terminator S Replacement Filters Snap Ring

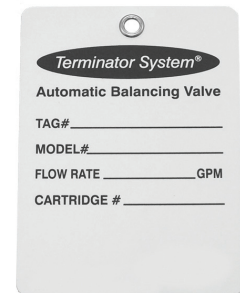
Copper Replacement Snap Ring

Part Number	Size	Description	List Price	Weight (Lbs)
TSA-SR	1/2" - 3/4"	Terminator S Filter Snap Ring	\$1.25	0.01
TSC-SR	1"	Terminator S Filter Snap Ring	\$1.75	0.01
TSD-SR	1-1/4"	Terminator S Filter Snap Ring	\$2.00	0.01
TSE-SR	1-1/2"	Terminator S Filter Snap Ring	\$2.50	0.02
TSF-SR	2"	Terminator S Filter Snap Ring	\$3.50	0.02



TB, TA & PICV Replacement Tag

Part Number	Size	Description	List Price	Weight (Lbs)
TB-RT	ALL Sizes	Terminator B Balancing Valve Tag	\$1.50	0.01
TB-RTA	ALL Sizes	Terminator A Balancing Valve Tag	\$1.50	0.01
TB-RTE	ALL Sizes	Terminator PICV Series Valve Tag	\$1.50	0.01



Assembly Charges

Piping Package Connection Charges

In-House Labor To Mount Control Valves, Flex Hoses Or Custom Packages

Part Number	Size	Description	List Price
TL-A	1/2"	Piping Connection Charge - Per Connection	\$8.00
TL-B	3/4"	Piping Connection Charge - Per Connection	\$9.00
TL-C	1"	Piping Connection Charge - Per Connection	\$10.00
TL-D	1-1/4"	Piping Connection Charge - Per Connection	\$11.00
TL-E	1-1/2"	Piping Connection Charge - Per Connection	\$12.00
TL-F	2"	Piping Connection Charge - Per Connection	\$13.00

Fittings

Brass Hex Bushings

Part Number	Size	List Price	Weight (Lbs)
H110-CA	1/4" MNPT X 1/8" FNPT Brass Hex Bushing	\$0.70	0.03
H110-EA	3/8" MNPT X 1/8" FNPT Brass Hex Bushing	\$1.65	0.03
H110-EC	3/8" MNPT X 1/4" FNPT Brass Hex Bushing	\$1.10	0.03
H110-FA	1/2" MNPT X 1/8" FNPT Brass Hex Bushing	\$2.25	0.1
H110-FC	1/2" MNPT X 1/4" FNPT Brass Hex Bushing	\$1.90	0.1
H110-FE	1/2" MNPT X 3/8" FNPT Brass Hex Bushing	\$1.70	0.05
H110-KC	3/4" MNPT X 1/4" FNPT Brass Hex Bushing	\$4.80	0.2
H110-KE	3/4" MNPT X 3/8" FNPT Brass Hex Bushing	\$5.90	0.2
HB-BA	3/4" MNPT X 1/2" FNPT Brass Hex Bushing	\$2.60	0.15
HB-CA	1" MNPT X 1/2" FNPT Brass Hex Bushing	\$8.00	0.25
HB-CB	1" MNPT X 3/4" FNPT Brass Hex Bushing	\$8.00	0.2
HB-DA	1-1/4" MNPT X 1/2" FNPT Brass Hex Bushing	\$16.65	0.35
HB-DB	1-1/4" MNPT X 3/4" FNPT Brass Hex Bushing	\$13.70	0.45
HB-DC	1-1/4" MNPT X 1" FNPT Brass Hex Bushing	\$13.75	0.4
HB-EB	1-1/2" MNPT X 3/4" FNPT Brass Hex Bushing	\$21.60	0.5
HB-EC	1-1/2" MNPT X 1" FNPT Brass Hex Bushing	\$17.60	0.5
HB-ED	1-1/2" MNPT X 1-1/4" FNPT Brass Hex Bushing	\$17.60	0.5
HB-FC	2" MNPT X 1" FNPT Brass Hex Bushing	\$31.50	0.85
HB-FD	2" MNPT X 1-1/4" FNPT Brass Hex Bushing	\$26.00	0.85
HB-FE	2" MNPT X 1-1/2" FNPT Brass Hex Bushing	\$26.00	0.85



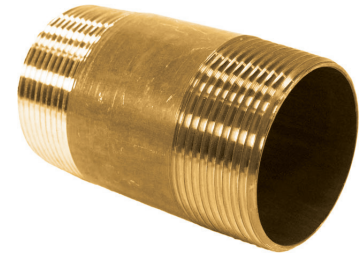
Brass Reducing Couplings

Part Number	Size	List Price	Weight (Lbs)
H119-KF	3/4" FNPT X 1/2" FNPT Brass Reducing Coupling	\$9.75	0.3
H119-MK	1" FNPT X 3/4" FNPT Brass Reducing Coupling	\$16.00	0.3
H119-QM	1-1/4" FNPT X 1" FNPT Brass Reducing Coupling	\$26.00	0.55
H119-RM	1-1/2" FNPT X 1" FNPT Brass Reducing Coupling	\$33.00	0.65
H119-RQ	1-1/2" FNPT X 1-1/4" FNPT Brass Reducing Coupling	\$33.00	0.7
H119-SM	2" FNPT X 1" FNPT Brass Reducing Coupling	\$54.50	1
H119-SR	2" FNPT X 1-1/2" FNPT Brass Reducing Coupling	\$48.50	1



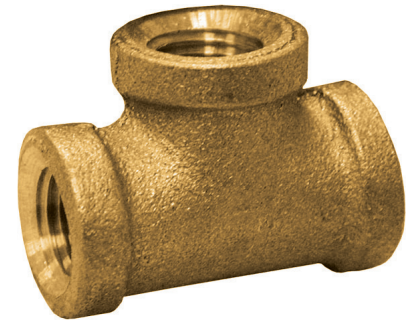
Brass Nipples

Part Number	Size	List Price	Weight (Lbs)
H122-KF	3/4" MNPT X 1/2" MNPT Brass Nipple	\$8.10	0.2
CN-A	1/2" MNPT Brass Close Nipple	\$2.10	0.05
CN-B	3/4" MNPT Brass Close Nipple	\$3.20	0.1
CN-C	1" MNPT Brass Close Nipple	\$7.75	0.15
CN-D	1-1/4" MNPT Brass Close Nipple	\$11.75	0.25
CN-E	1-1/2" MNPT Brass Close Nipple	\$15.25	0.3
CN-F	2" MNPT Brass Close Nipple	\$23.00	0.3
N-1/2X3	1/2" MNPT X 3 " Brass Nipple	\$8.00	0.2
N-3/4X3	3/4" MNPT X 3 " Brass Nipple	\$10.25	0.3
N-1X3	1" MNPT X 3 " Brass Nipple	\$15.00	0.35
N-1-1/4X3	1-1/4" MNPT X 3 " Brass Nipple	\$20.75	0.55
N-1-1/2X3	1-1/2" MNPT X 3 " Brass Nipple	\$26.25	0.65
N-2X3	2" MNPT X 3 " Brass Nipple	\$33.25	0.85



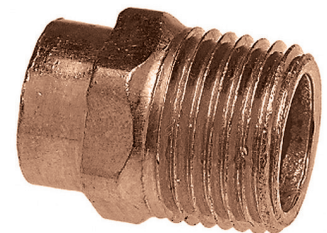
Brass Tee Special Order

Part Number	Size	List Price	Weight (Lbs)
TT-A	1/2" FNPT Brass Tee	\$7.00	0.3
TT-B	3/4" FNPT Brass Tee	\$13.00	0.5
TT-C	1" FNPT Brass Tee	\$22.00	0.9
TT-D	1-1/4" FNPT Brass Tee	\$31.00	1.4
TT-E	1-1/2" FNPT Brass Tee	\$42.00	2
TT-F	2" FNPT Brass Tee	\$70.00	2.7



Copper to Male Adapters

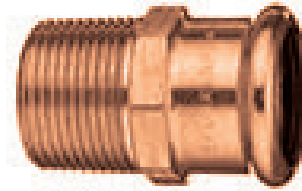
Part Number	Nominal Size	Description	List Price	Weight (Lbs)
CA-A	1/2"	5/8" O.D. X 1/2" MNPT - SWT Adapter	\$2.75	0.05
CA-B	3/4"	7/8" O.D. X 3/4" MNPT SWT Adapter	\$4.60	0.15
CA-C	1"	1-1/8" O.D. X 1" MNPT - SWT Adapter	\$12.00	0.2
CA-D	1-1/4"	1-3/8" O.D. X 1-1/4" MNPT - SWT Adapter	\$19.75	0.35
CA-E	1-1/2"	1-5/8" O.D. X 1-1/2" MNPT - SWT Adapter	\$21.50	0.45
CA-F	2"	2-1/8" O.D. X 2" MNPT - SWT Adapter	\$36.00	0.8



Fittings

Copper Press to Male Adapters

Part Number	Nominal Size	Description	List Price	Weight (Lbs)
PF-AM	1/2"	5/8" O.D. X 1/2" MNPT - Press Adapter	\$6.00	0.01
PF-BM	3/4"	7/8" O.D. X 3/4" MNPT - Press Adapter	\$10.75	0.02
PF-CM	1"	1-1/8" O.D. X 1" MNPT - Press Adapter	\$20.00	0.3
PF-DM	1-1/4"	1-3/8" O.D. X 1-1/4" MNPT - Press Adapter	\$44.00	0.35
PF-EM	1-1/2"	1-5/8" O.D. X 1-1/2" MNPT - Press Adapter	\$61.75	0.7
PF-FM	2"	2-1/8" O.D. X 2" MNPT - Press Adapter	\$119.00	0.9



Copper Fitting Reducer

Part Number	Nominal Size	Description	List Price	Weight (Lbs)
H118-FE	1/2" X 3/8"	5/8" O.D. X 1/2" O.D. SWT Adapter	\$2.45	0.05
H118-FC	1/2" X 1/4"	5/8" O.D. X 3/8" O.D. SWT Adapter	\$3.50	0.05
H118-KF	3/4" X 1/2"	7/8" O.D. X 5/8" O.D. SWT Adapter	\$3.55	0.05
H118-KE	3/4" X 3/8"	7/8" O.D. X 1/2" O.D. SWT Adapter	\$6.75	0.05
H118-MF	1" X 1/2"	1-1/8" O.D. X 5/8" O.D. SWT Adapter	\$9.55	0.05
H118-MK	1" X 3/4"	1-1/8" O.D. X 7/8" O.D. SWT Adapter	\$5.75	0.1
H118-ME	1" X 3/8"	1-1/8" O.D. X 1/2" O.D. SWT Adapter	\$9.10	0.05
H118-QF	1-1/4" X 1/2"	1-3/8" O.D. X 5/8" O.D. SWT Adapter	\$13.50	0.15
H118-QK	1-1/4" X 3/4"	1-3/8" O.D. X 7/8" O.D. SWT Adapter	\$10.50	0.1
H118-QM	1-1/4" X 1"	1-3/8" O.D. X 1-1/8" O.D. SWT Adapter	\$10.50	0.15
H118-RF	1-1/2" X 1/2"	1-5/8" O.D. X 5/8" O.D. SWT Adapter	\$17.55	0.2
H118-RM	1-1/2" X 1"	1-5/8" O.D. X 1-1/8" O.D. SWT Adapter	\$13.75	0.2
H118-RK	1-1/2" X 3/4"	1-5/8" O.D. X 7/8" O.D. SWT Adapter	\$13.75	0.2
H118-RQ	1-1/2" X 1-1/4"	1-5/8" O.D. X 1-3/8" O.D. SWT Adapter	\$13.75	0.2
H118-SM	2" X 1"	2-1/8" O.D. X 1-1/8" O.D. SWT Adapter	\$27.50	0.35
H118-SQ	2" X 1-1/4"	2-1/8" O.D. X 1-3/8" O.D. SWT Adapter	\$26.00	0.35
H118-SK	2" X 3/4"	2-1/8" O.D. X 7/8" O.D. SWT Adapter	\$35.00	0.35
H118-SF	2" X 1/2"	2-1/8" O.D. X 5/8" O.D. SWT Adapter	\$37.00	0.35



TERMS AND CONDITIONS OF SALE

UNLESS OTHERWISE SPECIFIED IN WRITING THE FOLLOWING WILL PREVAIL

GENERAL

The possession of the Jomar Hydronics catalog and/or literature is not to be construed as an offer to sell the goods listed herein. All orders shall be subject to the approval and acceptance Jomar Hydronics, hereinafter referred to as the Company, at its principal office in Warren, Michigan.

All Company proposals, all acceptances of Purchaser's orders, and all sales by the Company are expressly limited to, and expressly made conditional upon, the Purchaser's acceptance and assent to the Standard Terms and Conditions of Sale as set forth herein, notwithstanding receipt of, or acknowledgment of, the Purchaser's order form or specifications containing additional or different provisions, or conflicting oral representations by any agent or employee of the Company. No waiver, change or modification of any terms or conditions on the face or reverse hereof shall be binding on the Company unless made in writing and signed by an officer of the Company.

PRICES AND TERMS

All prices are subject to change without notice. Minimum billing is \$50.00. Terms are 2% 10th, NET 30 days subject to approved credit. Shipments can be expected, prior to establishing credit, by including check with order for full amount or specifying C.O.D.

Any order originating outside the contiguous United States, Alaska, Hawaii or Canada shall be subject to an irrevocable letter of Credit confirmed by a U.S. bank or a sight draft.

A finance charge at a periodic rate of 1-1/2% per month (annual percentage of 18%) will be added to unpaid invoices over 60 days old; said interest shall commence from the date of invoice.

PERFORMANCE GUARANTEE

The Company guarantees to the original purchaser that the equipment of its manufacture will perform at rated Capacity as stated only when (1) properly installed, connected, started, operated and maintained in accordance with Company Instruction(s), and or Information Guide(s), as revised from time to time, and (2) used for the applications specified and (3) used in the environments as specified or as limited. If equipment is part of a greater system, the Company accepts responsibility only for the equipment manufactured by it.

THIS EQUIPMENT MUST BE INSTALLED, OPERATED, AND MAINTAINED IN ACCORDANCE WITH THE APPROPRIATE INSTRUCTIONS(S) AND/OR INFORMATION GUIDE(S), AS REVISED FROM TIME TO TIME, PURCHASES OF THE COMPANY'S EQUIPMENT WAIVE SUBROGATION ON ALL ITEMS COVERED UNDER THEIR OWN OR OTHER INSURANCE.

LIMITED WARRANTY ON THE EQUIPMENT ITSELF

The Company, for a period of five year from the date of shipment, warrants each product or system of its own manufacture to the original purchaser to be free from defects in material and workmanship under normal use, Service and maintenance. Normal use, Service and maintenance means:

- Not in excess of the maximum Pressures, temperatures, volumes and rated Capacities or other parameters specified in the Company's Product Bulletins, Specification Sheets, and/or quotation(s).
- Using only fluids specified in the Company's Product Bulletins, Specification Sheets, and/or quotations.
- Operation and maintenance in compliance with the appropriate instructions and/or Information Guides.

The remedy under this warranty is limited to the repair or replacement of any parts found upon examination by the Company to have been defective, and shall not include removal and reinstallation costs involved in the exchange. The remedy shall be conditioned upon receipt of written notice by the Company of any alleged defects promptly after discovery thereof within the warranty period. Generally, consent, if given, will be upon the condition that the purchaser assumes and prepays all carrier charges.

THIS WARRANTY IS EXCLUSIVE. THE COMPANY EXPRESSLY DISCLAIMS ANY AND ALL OTHER WARRANTIES, WHETHER EXPRESSED OR IMPLIED, INCLUDING ANY IMPLIED WARRANTY OR MERCHANTABILITY OF FITNESS FOR A PARTICULAR PURPOSE OR, ANY PURPOSE.

No person, including any dealer or representative of the Company, is authorized to make any representations concerning the Company products or systems on behalf of the Company or to assume for the Company the obligations contained in this warranty. The Company reserves the right to make design and other changes, modifications or improvements upon its products or systems, without any obligation to install same on any previously sold or delivered products or systems. This warranty gives the purchaser specific legal rights. The purchaser may have other rights that vary from state to state.

LIMITATION OF LIABILITY

It is expressly agreed that the liability is limited and the Company does not function as an insurer. The purchaser and/or user agree that the Company is not liable for loss, harm or damage due directly or indirectly to any occurrence of consequence therefrom. If the Company should be found liable to anyone in any theory (except any express warranty where the remedy is set forth in this document) for loss, harm, or damage, the liability of the Company shall be limited to the lesser of the actual loss, harm or damage, or the original purchase price of the involved equipment, system or Service when sold (or when Services performed by) the Company to its customer. This liability is exclusive and regardless of cause or origin resulting directly or indirectly to person or property from:

- The performance or non-performance of any obligation set forth in this warranty and warranty policy.
- Any agreement, oral or written, including specifications, between the Company and the customer.
- Negligence, active, passive or otherwise, of the Company or any of its agents, employees, or independent contractors.
- Breach of any judicially imposed warranty or covenant and,
- Misrepresentation or strict liability involvement.

FREIGHT ALLOWANCE

All prices are FOB Warren, Michigan with full freight prepaid and allowed within the contiguous United States on shipments of \$1,500.00 net or more. Any combination of products, items or Sizes

may be combined to satisfy the dollar amount required to earn full freight allowance. The Company reserves the right to select the most economical routing and shall not be liable or responsible by reason of the mode or route of shipment.

EXPORT SHIPMENTS

All prices are FOB plant, Warren, Michigan, with full freight prepaid and allowed to Port of Exit on shipments of \$1,500.00 net or more.

PACKAGING

All list prices are based on domestic packaging. For export packaging, contact the factory for pricing.

DELIVERY

The quoted time of delivery is understood to be from date of receipt of all necessary information including Purchaser's approval, if applicable. Any delay in delivery of any installment shall not relieve purchaser of its obligation to accept remaining deliveries. The Company shall not be liable for damages or for cancellation of the contract as a result of any delay due to any cause beyond the Company's reasonable control including, but not limited to, act of God, act of the purchaser, embargo or other governmental acts, regulations or requirements, fire accident, labor disputes, war, civil insurrection or riot, delay in transportation or the inability to obtain necessary labor, materials or manufacturing facilities. In the event of any such delay the date of delivery shall be extended for a period equal to the time lost by reason of the delay. All shipments, unless otherwise specified, shall be FOB shipping point and the purchaser assumes responsibility for damage or loss in transit. The Company shall not be liable or responsible by reason of the mode or route of shipment.

Products or goods not of Company manufacture supplied in piece, or as components to a system designed or sold by the Company, are not covered by this warranty. However, the Company will extend to the purchaser the benefit of such adjustment as is obtained from the manufacturer of that component or product.

This warranty does not apply to damage caused by any or all of the following circumstances or conditions:

- Freight damage.
- Parts and/or accessories or components not obtained from or approved by the Company.
- Any consequential or incidental damage arising from the use of the product, system or other goods manufactured or sold by the Company.
- Misapplication, misuse, abuse, or failure to follow the Product Instruction Sheets and/or Information Guides

SPECIAL PRODUCTS

Special products produced to order, or products not normally stocked, are subject to a 10% overrun or under run. Pattern equipment, tooling, etc., built for the manufacture of purchaser's products shall at all times remain in the possession of the Company. Since such equipment is made or supplied on a non-profit basis, it shall not be removed from the Company's plant except upon payment of a minimum 20% charge: based on the original equipment costs to cover engineering, drafting, and handling. The Company agrees to maintain such equipment except the major repairs or replacement would be at the purchaser's expense. If no orders have been received for production for a period of eight months, the Company accepts no liability for the continued existence or availability of such equipment after such period. Written notification advising the customer of the expiration date will not be required of the Company.

BUYER'S PURCHASE ORDER TERMS

The terms on the purchase order shall not change, enlarge, or modify Company's liability or obligations.

SHORTAGE AND BREAKAGE

The Company's responsibility for delivery of materials sold FOB shipping point ends when the receipt is obtained from the consignor of the transportation company. It is agreed that the purchaser shall notify the Company of any shortage within five (5) days from receipt of the material. In the event of loss or damage incurred in transit, the carrier shall be responsible and claims for parts broken or lost in shipment are to be filed with the transportation company by the purchaser.

CANCELLATION OF ORDERS

If, for any reason, the purchaser desires to cancel an order, such cancellation shall only be with written consent of the Company, and then only after payment is made to the Company for all costs incurred which shall include but not be limited to, material, labor, overhead, and reasonable profit.

RETURNS AND RESTOCKING CHARGES

Equipment may be returned to Jomar Hydronics at 7243 Miller Drive, Warren, Michigan 48092, only upon prior written authorization of the Company. Consent, if given, will be upon the condition the purchaser assumes all carrier charges responsibility to damages in transit, and a minimum 25% restocking charge, and then only if the so authorized material is in new and unused condition and returned within one year from the original date of shipment. The credit will be based on the original invoice price or the current price, whichever is lower, less the applicable restocking charge.

Service

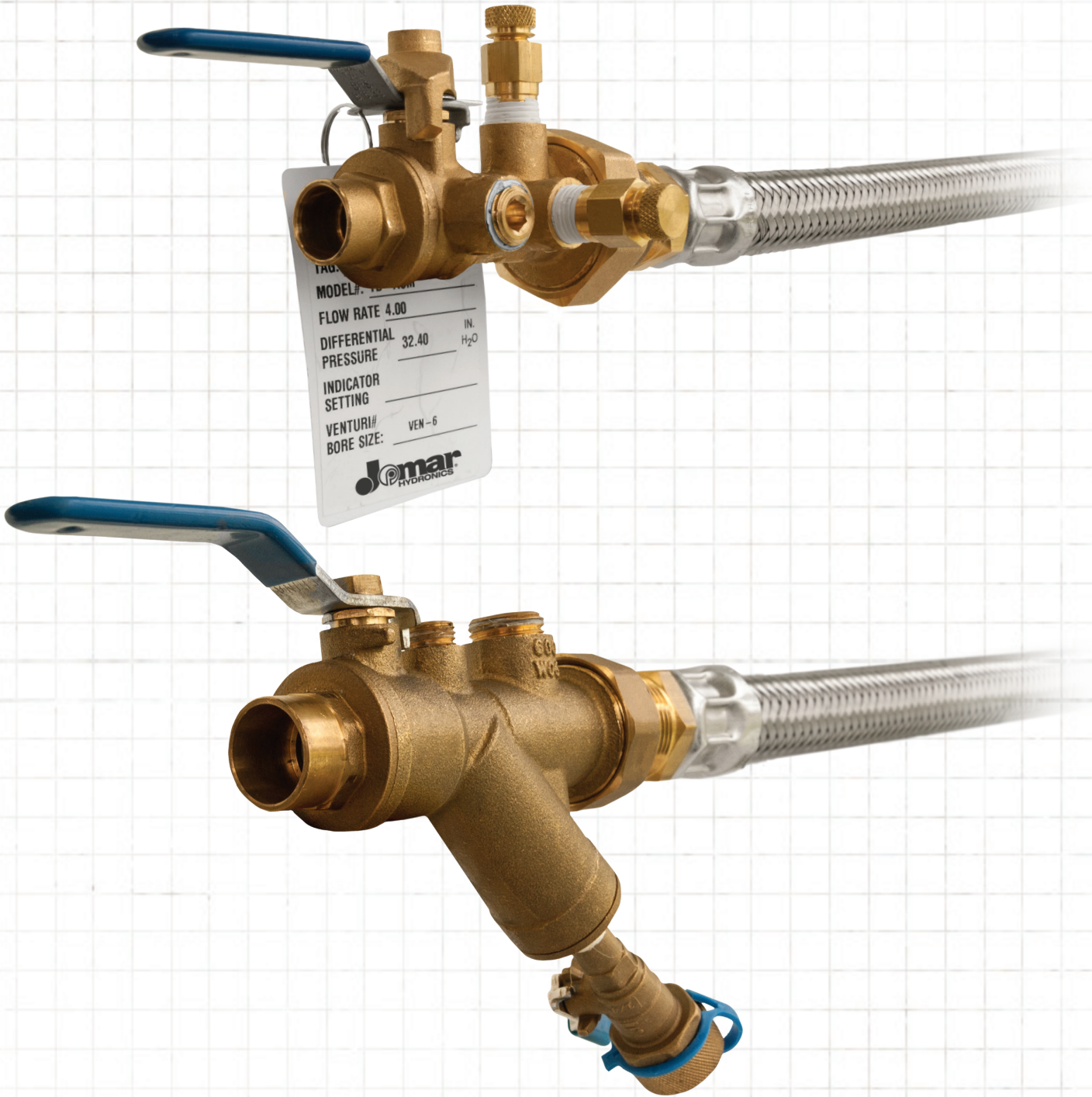
Unless otherwise noted herein, the cost of the equipment does not include Service or installation. All Services performed by the Company are subject to purchaser's payment of the Company's prevailing charges plus necessary travel and living expense.

TAXES

Any tax or taxes that may be imposed upon the goods that are the subject of this sale, or upon the sale or delivery, shall be added to and become a part of the contract price.

REGULATIONS

Every contract of sale shall be subject to all applicable state and federal statutes and regulations. The terms of this agreement shall be construed in accordance with the laws of the state of Michigan.



7243 Miller Drive • Warren, MI 48092
phone: 800-325-5690 • fax: 800-628-4194
www.jomarhydraulics.com